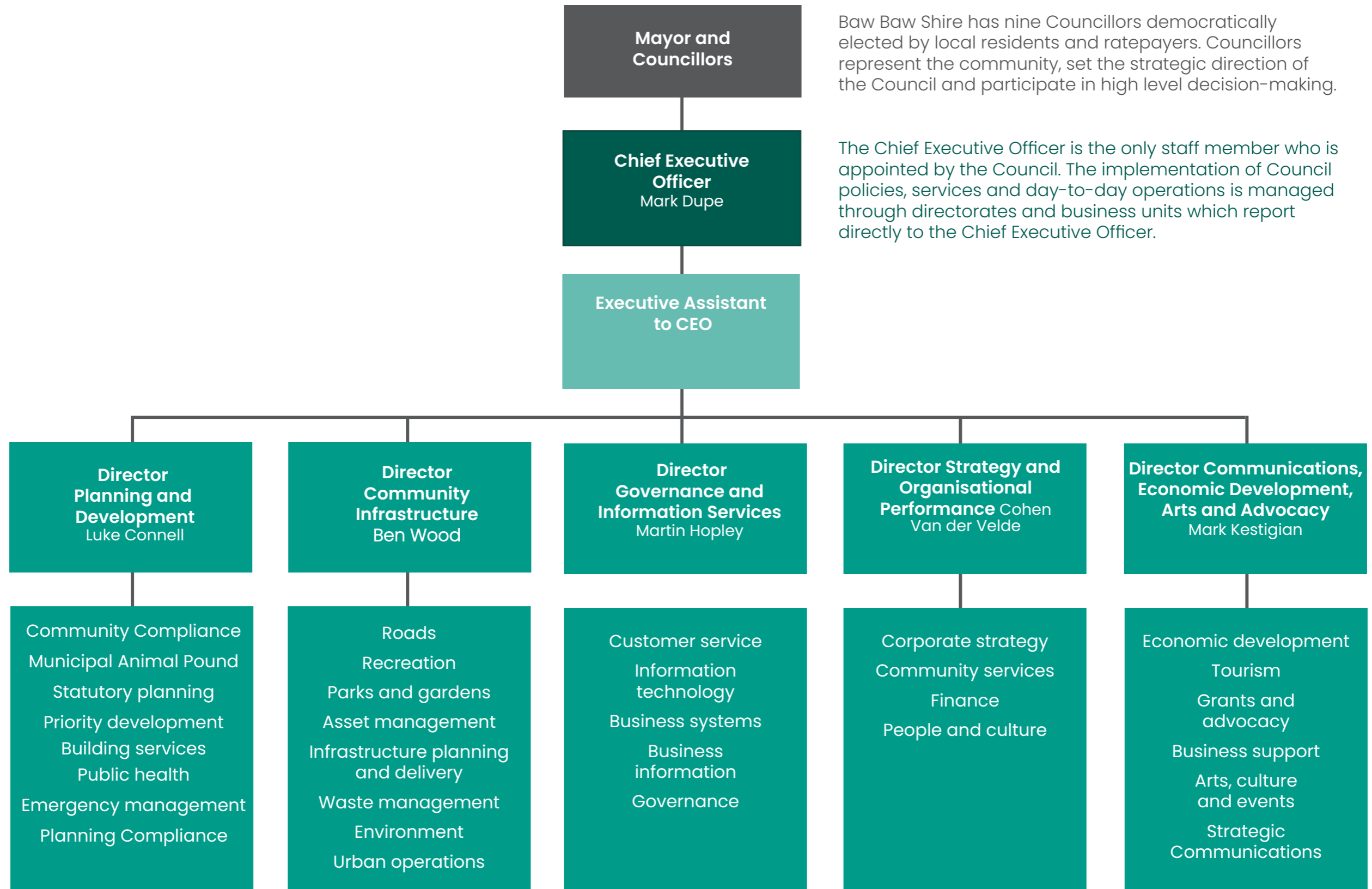




Organisation structure.



Baw Baw Shire has nine Councillors democratically elected by local residents and ratepayers. Councillors represent the community, set the strategic direction of the Council and participate in high level decision-making.

The Chief Executive Officer is the only staff member who is appointed by the Council. The implementation of Council policies, services and day-to-day operations is managed through directorates and business units which report directly to the Chief Executive Officer.