



Municipal Fire Management Plan

2018-2021

Version 4.0 October 2018



Authorisation and Endorsement

Baw Baw Shire Council is the custodian of this Municipal Fire Management Plan (MFMP), as a sub plan of the Municipal Emergency Management Plan (MEMP).

This MFMP has been produced by the Municipal Fire Management Planning Committee (MFMPC) pursuant to Section 20 of the *Emergency Management Act 1986* (EM Act) and will be deemed to fulfil Section 55A of the *Country Fire Authority Act 1958* (CFA Act).

Version Control

Version	Date	Brief Description of Changes
Version 1.0	31/10/2011	Document creation
Version 2.0	11/04/2013	Inclusion of structural fire and fires involving chemicals. ABS and fire history updates.
Version 2.1	11/08/2015	Reviewed Plan updated.
Version 2.2	05/11/2015	Reviewed Plan Adopted
Version 2.3	10/11/2016	Reviewed Plan
Version 3.0	29/11/2016	Plan endorsed by MEMPC
Version 4.0	17/10/2018	Reviewed Plan

The Baw Baw MFMP has made every effort to ensure the accuracy of the information contained within this plan.

Any inaccuracies or omissions should be notified to:

Coordinator Emergency Management (MERO/MFPO)

Baw Baw Shire Council

Toll Free: 1300 BAW BAW (1300 229 229)

Email: emergency.management@bawbawshire.vic.gov.au

Postal Address: PO Box 304, WARRAGUL VIC 3820

Table of Contents

Part 1 – Introduction.....	6
Introduction to Fire Management.....	6
Planning Process.....	7
Period of Plan.....	7
Stakeholder Analysis, Community and Organisational Engagement Process	7
Part 2 – Engagement and Communications.....	8
Part 3 – Summary of Environmental Scan.....	9
Location and Land Managers	9
Economy.....	10
Natural Resources	10
Baw Baw Shire Community Profile.....	11
Climate.....	11
The impacts of Climate Change	11
Baw Baw Fire History Summary	13
Planning Priorities (Values).....	14
Part 4 – Fire Management Objectives.....	16
Plan Aim.....	16
Plan Objectives	16
Plan Outcomes	17
Links to Other Plans.....	18
Links to Organisations.....	18
Part 5 – Fire Management Risk Strategies.....	18
Bushfire Treatments.....	19
Structure Fire Risk Treatments.....	20
Fires Involving Chemicals Risk Treatments.....	21
Part 6 – Improvement, Plan Reporting and Review Process.....	23
Audit Plan.....	23
Plan Review and Update.....	23
Attachment A-1 Register of Assets at Risk – Bushfire	24
Attachment A-2 Register of Assets at Risk – Structure Fire.....	38

Attachment A-3 Register of Assets at Risk – Fires Involving Chemicals.....	45
Attachment B-1 – Hazard Trees Identification (Electricity Safety Act 1998)	46
Attachment B-2 – Community Information Guides – Bushfire	52
Attachment B-3 – Neighbourhood Safer Places/Place of Last Resort.....	53
Attachment B-4 – Community Fire Refuges.....	54
Attachment C – Maps	55
Map 1: Baw Baw Shire Bushfire Management Overlay	56
Map 2: Baw Baw Shire: Road Classification.....	57
Map 3: Human Settlement (Assets at Risk – Bushfire).....	58
Map 4: Economic (Assets at Risk – Bushfire).....	59
Map 5: Cultural/Heritage (Assets at Risk – Bushfire).....	60
Map 6: Environmental (Assets at Risk – Bushfire).....	61
Map 7: Baw Baw Shire Fire Infrastructure.....	62
Attachment D – Links to other plans	63
Attachment E – Fire Access Roads.....	65
Attachment F – Static Water Supplies.....	66
Attachment G – Fuel Management Break Systems	67
Attachment H – MFMPC Membership and Stakeholder Distribution List.....	71
Attachment I – Glossary.....	72
Attachment J – Acronyms	76
Attachment K – References	77

Part 1 – Introduction

Introduction to Fire Management

The underlying basis of fire management is the protection and preservation of life, property and the environment. Within this context there are three fire risk elements for communities in the Baw Baw municipality;

- bushfire or grassland fire;
- structure fire; and
- fires involving chemicals.

The purpose of the MFMP is to articulate the planned and coordinated implementation of measures designed to;

- minimise the occurrence of fire;
- mitigate the effect of fire; and
- the planned use of fire for a variety of purposes.

An important aspect of implementing the MFMP is to engage the community to obtain a valid influence in the fire management planning process. It ensures that the Baw Baw MFMP responds to the community's needs, values and risks.

Bushfire

The Baw Baw municipality is a fire prone environment dictated by a climate of wet winters and hot dry summers. Fire management needs to be conducted with an understanding of both the role fire plays, the threats it can pose to life and property, in biodiversity maintenance and the management of our parks and forests.

Bushfires are a vital part of our natural environment, driving regeneration and maintaining the health of species and ecosystems. The combination of drought, climate change and unnaturally high fuel loads have created an unprecedented bushfire risk. Recent times have seen a dramatic increase in the number, size and severity of bushfires in Victoria.



Photo: G Pike - Aberfeldy-Donnelley's Fire; Friday 18 January 2013

Structure Fire

Structure fire is a hazard directly relating to surroundings that are manmade and provide the setting for human activity. Structure fire can lead to impacts on the following building types:

- residential
- industry
- commercial

- infrastructure
- public assembly
- public accommodation
- healthcare and special accommodation
- agriculture
- marine

Structure fires occur regularly through the year with fires at residential properties being the most common.

Fire Involving Chemicals

A chemical fire involves the actual ignition of a hazardous material in sufficient quantity to pose a danger/threat to life, economy, environment and services to the community. A chemical fire may occur during manufacture, use, handling, transport or storage.

Whilst there is little documented history of chemical caused fires in Baw Baw Shire, there have been occurrences of fires involving chemicals. These fires are more complex to manage and control due to the potential for toxic fumes, damaging environmental runoff, and the possibility of increased or erratic fire behaviour.

Planning Process

This MFMP includes the other elements of fire risks, of structural fire and fires involving chemicals. This plan addresses the mitigation of, response to and recovery from fire emergencies within the municipality and has been developed by the Baw Baw MFMP.

The MFMP is not designed to be a duplication of existing plans, rather to consolidate and coordinate the significant range of plans that exist within Baw Baw Shire that relate to fire.

Period of Plan

This plan has been endorsed by the Baw Baw Municipal Emergency Management Planning Committee (MEMPC) on the recommendation of the Baw Baw MFMP for a period of three years, commencing as of the date of adoption by Baw Baw Shire Council.

Stakeholder Analysis, Community and Organisational Engagement Process

Fire safety is a shared responsibility between individuals, the community, government agencies, private sector and non-government organisations and requires a collaborative approach. All stakeholders are given the opportunity to contribute to fire management planning and undertake appropriate action to address the risk of fire.

Part 2 outlines the process undertaken in relation to community and stakeholder engagement.

Part 2 – Engagement and Communications

Version 1.0 of this plan was made available for comment via the Baw Baw Shire Council website for a period of three months in early 2012 and was on display at the Lardner Park Farm World in February that same year. No formal submissions were received.

Version 3.0 introduced the inclusion of structure and chemical fire hazards in the plan. This drove the MFMP to determine that a more rigorous process of engaging with communities, business and organisations is to be undertaken. This being an important aspect of implementing a full MFMP so that all stakeholders have a valid influence in the fire management planning process and that the MFMP responds to the broader community needs, values and perceived risks.



Noojee Evacuation Exercise 2011: Photo provided by the Fire Services Commissioner, Victoria

Part 3 – Summary of Environmental Scan

Location and Land Managers

Baw Baw Shire is located in West Gippsland, approximately 120 km east of Melbourne and covers approximately 4,027 square kilometres of high-quality farmland and woodlands and also has the closest snow fields to Melbourne.



Table 1. Land Managers (Source: DELWP PLM25 GIS dataset)

Land Managers	% of MFMP Area	Area (ha)
National Parks Act & Nature Conservation Reserves	6.94	27,982
Other Conservation Reserves	1.13	4,574
State Forest	46.88	189,008
Other Public Land	2.69	10,829
Leased Plantation	1.28	5,169
Freehold	40.96	165,146
Mount Baw Baw Alpine Resort (UNINC)	0.11	434
Total	100	403,142

Economy

Baw Baw Shire is known for innovation in manufacturing, design and agribusiness. It is home to a major dairy sector, some of Australia's leading hydroponics and agribusiness companies, and innovative food processing companies.

Industry sectors which contribute significantly to Baw Baw Shire's output include manufacturing, construction and agriculture. The health care and social assistance, agriculture and education and training industry sectors are the largest employers in the municipality.

Economic Infrastructure

Drouin is at the western end of a 190 km major population corridor. This corridor from Drouin, through the Latrobe Valley to Sale and Bairnsdale is well serviced by a freeway link to Melbourne.

The significant growth being experienced in Baw Baw Shire, being among the fastest growing municipalities in the State, is driving the need for upgrades to main transport corridors, particularly in rural-urban interface areas where more people are moving for the lifestyle but still work in metropolitan Melbourne.

Water Storage Facilities – There are two water storage areas located within the municipality. These include the Tarago Reservoir and Thomson Dam. The Thomson Dam is currently used for water harvesting operations for metropolitan Melbourne. Local water supply catchment areas include the Blue Rock Dam and Moondarra Dam.

Road Transport – Milk tankers, timber logging trucks, trucks carrying dangerous/hazardous goods and school and tourist buses traverse the many rural roads as well as the Princes Freeway/Highway.

Gas and Oil Transmission – Approximately 60% of Australia's crude oil is transmitted from off shore platforms via steel pipes through the municipality to Hastings. Pumping stations are located at Westbury and Tanjil South.

Rail Transport – A regular passenger rail service operates between Melbourne and Traralgon. This is augmented by a Melbourne – Gippsland bus service.

Natural Resources

Baw Baw Shire is located in undulating countryside between the Baw Baw Plateau and the Strzelecki Ranges. The Shire varies in vegetation cover and comprises of well-developed fertile pasture land in the central and southern areas and has extensive tracts of forest in the northern ranges.

Mount Baw Baw, the Tarago and Thomson Rivers, Blue Rock Dam, Toorong Falls Reserve, Glen Nayook, the Ada Tree, Mount Worth, Moondarra and Tarago Reservoirs are just some of the natural wonders the Baw Baw Shire boasts.

A substantial forestry industry operates within the municipality and includes both plantation and Crown Land production of hard and soft wood timbers which are used for both milling and paper production.



Baw Baw Plateau

Baw Baw Shire Community Profile

Current statistics about the Baw Baw municipality demography is available at the Baw Baw Shire Council website's REPLAN page at www.communityprofile.com.au/bawbaw/trends/population.

Statistics include information on the;

- built environment;
- Socio-economic Indexes for Areas (SEIFA);
- population; and
- employment.

Climate

The climate of Baw Baw Shire is temperate and seasonal, where a high annual rainfall can be around 1070mm. Mean maximum temperatures in lower areas range from 24 °C in January to 15 °C in July. In the highlands of the Baw Baw Plateau, temperatures range from a maximum of 18 °C to a minimum of 8 °C. However, in winter, mean minima in these areas can be as low as -4 °C, leading to snowfall between June and November.

The impacts of Climate Change

Baw Baw Shire sits within the Victorian Government's 'West Gippsland Region (Climate Change Profile)' and is known to be a part of Australia's Southern Slopes (Victoria East).

Temperatures have increased over the past century, with the rate of warming higher since 1960. This has seen over the past 100 years a global surface air temperature rise by almost 1°C. Our climate has varied throughout history, although it is the long-term average that is changing. This is due to human activity through our release of greenhouse gases from the burning of fossil fuels, land use change and agriculture. Atmospheric concentrations of carbon dioxide are now more than 40% higher than they were before industrialisation.

Changes in climate will have a range of impacts on our natural environment, tourism, water resources, community health, infrastructure and primary production. The frequency and intensity of bushfires will also increase, with the richness of our biodiversity and the health of our community and landscapes being affected.

Natural environment impacts - The impacts climate change can have on the natural environment can be quite extensive. It can amplify existing threats to flora and fauna, change habitat and change the dynamics of invasive species.

Water - Decreases in rainfall and higher evaporation rates will mean less soil moisture and less water for rivers. Our demand for water may also increase as a result of warmer temperatures and as our population grows. Therefore, our need to use water more efficiently will be even

greater. Greater bushfire activity could temporarily contaminate water catchments with sediments and ash.

Farms and primary production - Climate change will have both positive and negative impacts on the types of crops we grow and the productivity of our primary production systems. Any reduction in rainfall will place most farms under stress, particularly when linked to higher temperatures. Some impact studies have been carried out, and have identified;

- increased heat stress on dairy cattle, reducing milk production;
- increased frequency and duration of extreme drought;
- inadequate winter chilling for some fruit trees, which may reduce fruit yield and quality, however, higher temperatures are likely to reduce the risk of damaging winter frosts for other crops;
- in viticulture, higher temperatures are likely to reduce grape quality;
- less soil moisture, resulting in soil erosion; and
- habitat fragmentation, weeds and pest animals.
- Variability on vector-borne diseases (see Bulletin of World Health Organisation 2000 78, 'Climate Change and Vector-Borne Diseases: A regional analysis', A Githeko, S Lindsay, U Confalonieri, J Patz, World Health Organisation, p 1136-1147).

Other climate change impacts such as heavy rains and winds from storm events will also contribute to crop damage and soil erosion.

Communities - There are many community health impacts that can arise from climate change. As global temperature levels rise, it will increase the frequency and magnitude of heatwaves. These heatwaves can lead to prominent fire weather, more stress on health and emergency services, more heat-related deaths, particularly among the elderly and disadvantaged, it can lead to mental health effects and changes in disease occurrence.

Climate change can also result in more extreme weather events such as flash flooding and bushfires. These events have significant impacts on the community and community health. We need to understand and consider these risks to be able to minimise the risk. The availability and cost of insurance may also change as a result of extreme events.

Alpine - Climate change is expected to result in shorter, drier winters which have significant impacts on Victoria's unique alpine region and the plant and animal species that live there, many of which are already endangered. Species, such as the Baw Baw Frog will have nowhere to retreat to as the climate warms. Reductions in snow cover, increased risk of bushfires and invasion of weeds and other pests will also have significant impacts. The alpine resort of Mount Baw Baw is an important economic driver for the local region. Previous research by CSIRO indicates that alpine areas are likely to experience shorter snow seasons and decreased natural snow cover, although with snowmaking the alpine resorts will have enough snow for snow activities until at least 2020. Lower elevation resorts like Mount Baw Baw are particularly vulnerable.

Tourism impacts - Climate change can increase threats to tourism infrastructure, can cause damage to popular environmental sites and can cause risks to tourists who may be unfamiliar with conditions.

Baw Baw Fire History Summary

Bushfire

The majority of bushfires in Baw Baw occur in grass or low scrub (around 85.8%) with 43.1% of all bushfires being contained to one hectare or less in size. The known top ignition factors are:

- Unattended and inadequate control of open fires 20.4%
- Deliberately lit fires 12.6%
- Lightning 13.2%

Approximately 59% of Baw Baw is made up of Public Land (including Mount Baw Baw Alpine Resort and lease plantations), while some 41% is privately owned.

Significant bushfires in the last decade are detailed below:

Year	Size	Event
2003	750Ha	Stolls Road fire.
2004	2,697Ha	Blue Rock fire.
2006	15,000Ha	Moondarra fire burnt State forest, National Park, private property and plantations.
2006	600Ha	more than 600 hectares were burnt south west of Erica.
2009		Black Saturday Fires. Heavy losses both life and property throughout the State.
2013	86,840Ha	Aberfeldy- Donnelley's fire. Losses included one person deceased, 21 homes, 54 sheds/outbuildings, 17 vehicles and 170 livestock.
2014		Westbury, Drouin West and Neerim South
2018	243Ha	McDonalds Track, Seaview plantation/bushfire.

Structure Fire

During the financial year periods of 2000/2001 to 2010/2011, the average number of structure fires was 31 per financial year, or 8.6 structure fires per 1,000 head of population. During this period residential house and residential garage fires made up 66.2 % of all structure fires. For all other types of structure fires (e.g. livestock production, general storage, manufacturing, commercial) each recorded less than 20 incidents over the 11-year period.

A breakdown of estimated total loss from preventable residential fires in District 9 in 2017 amounted to \$643,5100.



Fires involving Chemicals

During the financial year periods of 2000/2001 to 2010/2011 no fires involving chemicals were recorded by CFA in Baw Baw.

Planning Priorities (Values)

The priorities or “values” for fire management in Baw Baw Shire are:

- protection and preservation of life is paramount;
- protection of residential property as a place of primary residence;
- protection of critical infrastructure and community assets that support community resilience;
- protection of assets supporting individual livelihoods and economic production that supports individual and community financial sustainability; and
- protection of environmental and conservation values that consider the cultural, biodiversity, and social values of the environment.

These priorities are consistent with Gippsland regional and State fire management policies and plans.¹²

Future Fire Management

An analysis of the environmental scan concluded the following context and future implications for fire management:

Context	Implications for future fire management
<p>Continuing population growth in Warragul and Drouin is driven by a number of factors including strong population growth in Melbourne, housing affordability, and improved transport infrastructure to major employment centres in Melbourne.</p> <p>In balancing urban growth pressures surrounding towns Council is taking action to manage growth including delivering an up-dated planning scheme, structure plans for major towns, direction for urban and rural sustainability, subdivision guidelines and planning policy.</p> <p>Bushfire planning provisions were implemented from 2012 onwards – with a focus on protection of human life.</p> <p>Median age for residents’ is 40 with 30.1% of the population being over 55 years. The prediction is that the population will continue to age with people living longer and retirees moving to the area.</p> <p>Bushfires have immediate and long-term psychological impacts on individuals and communities, including anxiety, fatigue and financial stress.</p>	<p>“Tree change” trend to semi-rural lifestyles means more lives and assets are at risk from bushfires. The value of assets has also increased dramatically with rising property values and investment.</p> <p>Ongoing development of the urban rural fringe. These interface areas are more vulnerable with increased risk of ember attack. Need for buffer zones and preventative burning.</p> <p>Decreasing mobility and ability to prepare and defend properties against bushfire.</p> <p>Decreasing mobility also raises vulnerability in structure fires.</p> <p>Evacuation issues during a major bushfire: require designated roads protected to aid with evacuation and emergency services access. CIGs and NSP/PLR will all require a greater commitment to community engagement.</p>

¹ IFMP strategy 2009

² Building new foundations - Fire Services Commissioner, Victoria

Context	Implications for future fire management
<p>Lower social economic population group less likely to look after themselves or to maintain fire safe properties, may result in greater risk for occupant and fire services. Likely to increased level of dependency on EM agencies.</p>	<p>Disadvantaged less likely to have the capacity or resilience to live in higher risk areas, respond or recover from a bushfire. Hence a greater demand for 'targeted' community engagement. However, a range of communities are actively engaged in community planning processes and there is evidence that those communities have developed higher levels of capacity and resilience.</p>
<p>Structure fires predominately occur in "Residential year-round use" properties (59.6%) followed by "Residential garages" (6.6%) In 2016 occupied private dwellings totalled 17,647</p>	<p>Continuation of CFA's corporate and regional home fire safety education programs.³</p>
<p>The Shire has a major west-east transport corridor along the Princes Hwy of both road and rail; with the Princes Hwy being the main supply route to Melbourne in the west and NSW in the east. In addition, much of the state's infrastructure assets pass through the municipality, including those related to water, power, gas and oil. Tourism and its associated service industries and agriculture are particularly vulnerable to the impact of bushfires. Loss or closure of tourism icons i.e. Mount Baw Baw Alpine Resort will result in high economic losses – could be devastating for remote settlements.</p>	<p>It is a high priority to minimise any impact on or disruption to the Princes Hwy during and after any bushfire event. The maintenance of, or timely re-instatement of essential services infrastructure is a high priority in the event of a bushfire. Require an integrated approach by owners and managers for bushfire prevention, preparedness, response and recovery to ensure the preservation of essential services and safe routes for supply, evacuation and emergency services workers.</p>
<p>Most of the Shire's biodiversity value is located in the North due to the relatively intact nature of its native vegetation, ranging from foothill forests to alpine woodlands. While fire is vital for maintaining the health and regeneration of our ecosystems, severe bushfires can have devastating impacts on biodiversity, with few refuges left for recovery of both plants and animals. Fires in catchment areas have both immediate and long-term impacts on water supply in terms of quality, erosion, river health and yields. Air quality for the region and beyond is also an issue to be managed. Climate change in the Shire may have a range of impacts e.g. on water resources, bushfire frequency and intensity, primary production and infrastructure. As well as the direct environmental impacts of climate change it will interact with other drivers of change such as population growth.</p>	<p>Need to further improve the community's understanding of the role of fire in the environment (DELWP FOPs) and increase shared responsibility for risk, prevention and preparedness for bushfire. Management of fuel loads must be a priority, which increases the workload on fires services and municipalities. Minimise water use in a bushfire, replacement of water from private dams.</p>

³ Fires in the home - CFA

Part 4 – Fire Management Objectives

Plan Aim

For the MFMP to collaboratively work together with the Baw Baw community, including organisations and business, to develop a plan that is risk based and enables a whole of landscape approach to fire management planning and to implement the plan in an integrated and coordinated approach to benefit the community and those that adjoin it.

Plan Objectives

Municipal Objectives	Gippsland Regional Objectives
<p><i>Key Theme 1</i> <i>Planning together</i></p> <p>The Baw Baw Municipal Fire Management Planning Committee (MFMP) will consist of appropriate representatives from relevant fire agencies, local government and other agencies as appropriate. The committee will meet at least quarterly.</p> <p>The Baw Baw MFMP will:</p> <ul style="list-style-type: none"> Carry out a municipal risk assessment and treatment analysis using an agreed consistent process i.e. Victorian Fire Risk Register – Bushfire (VFRR-B) Use municipal environmental scan data to inform the planning process. Carry out a stakeholder analysis and develop a communications plan which takes into account existing channels of communication and the needs of stakeholder groups including communities. 	<p><i>Key Theme 1</i> <i>Planning together</i></p> <p>The Gippsland Regional Strategic Fire Management Planning Committee (RSFMPC) will consist of appropriate representatives from government and other agencies as outlined in the IFMP framework, will meet at least quarterly.</p> <p>To support the development of Municipal Fire Management Plans (MFMPs) for each Gippsland municipality the Gippsland RSFMPC will:</p> <ul style="list-style-type: none"> Carry out a risk assessment for the Gippsland region which identifies Regional and above risks and provide a list of risks and recommended treatments to Gippsland Municipal Fire Management Planning Committees (MFMPs) for consideration in the development of their plans Ensure each MFMP has access to demographic, climate and population statistics and forecasts for their municipality to assist in the planning process Carry out a stakeholder analysis and develop a communications strategy which takes into account existing channels of communication and the needs of stakeholder groups and the broader community.
<p><i>Key Theme 2</i> <i>Implementing collaboratively</i></p> <p>Member agencies of the Baw Baw MFMP will actively support the municipal planning process through the provision of appropriate staff, expertise and data.</p> <p>Member agencies of the Baw Baw MFMP will contribute to the delivery of agreed works and treatments through inclusion in their agency business plans.</p> <p>For bushfire the Baw Baw MFMP will work with adjoining municipalities to ensure a seamless approach to fire management across boundaries.</p>	<p><i>Key Theme 2</i> <i>Implementing collaboratively</i></p> <p>Member agencies of the Gippsland RSFMPC will actively support the municipal planning process through the provision of appropriate staff, expertise and data.</p> <p>Member agencies of the Gippsland RSFMPC will contribute to the delivery of agreed works and treatments through inclusion in their agency business plans.</p> <p>For bushfire the RSFMPC will evaluate and monitor planning arrangements across municipal boundaries and will provide expert advice and</p>

Municipal Objectives	Gippsland Regional Objectives
	<p>assistance to ensure a seamless approach to fire planning across the region.</p> <p>The RSFMPC will work with adjoining regions and the NSW fire services to ensure a seamless approach to bushfire management across boundaries.</p>
<p><i>Key Theme 3</i> <i>Building knowledge</i></p> <p>The Baw Baw MFMPC will review municipal risks and treatments annually and provide any amendments to the MEMPC and the Gippsland RSFMPC.</p> <p>The Baw Baw MFMP will be reviewed for currency annually, after a major incident or as directed under legislation.</p>	<p><i>Key Theme 3</i> <i>Building knowledge</i></p> <p>The RSFMPC will review regional risks annually and provide any amendments to relevant MFMPCs for consideration.</p> <p>The Regional Strategic Fire Management Plan (RSFMP) will be reviewed for currency annually, after a major incident or after significant changes to the environment, agency composition or responsibilities, or regional infrastructure</p>
<p><i>Key Theme 4</i> <i>Building capacity</i></p> <p>The Baw Baw MFMPC will actively seek opportunities for stakeholder collaboration to improve outcomes for communities and to reduce duplication and agency workloads.</p>	<p><i>Key Theme 4</i> <i>Building capacity</i></p> <p>The RSFMPC will actively seek opportunities for agency collaboration to improve outcomes for communities and to reduce duplication and agency workloads</p>
<p><i>Key Theme 5</i> <i>Using fire</i></p> <p>The Baw Baw MFMPC will actively encourage the use of planned fire to achieve positive ecological and community safety outcomes.</p> <p>The Baw Baw MFMPC will work with fire agencies in the development of processes aimed at improving fire management on private land for community safety, as well as ecological purposes.</p>	<p><i>Key Theme 5</i> <i>Using fire</i></p> <p>The RSFMPC will actively encourage the use of planned fire to achieve positive ecological and community safety outcomes</p> <p>The RSMPC will work with fire agencies in the development of policies and strategies aimed at improving fire management on private land for ecological as well as community safety purposes, and to achieve integration of complementary works on Private and Public land.</p>

Plan Outcomes

- This Plan will assist in the coordination of fire mitigation works and treatments across all land tenures, the community and all agencies.
- Identify and review existing fuel management breaks, control lines and fire access road networks and then map to aid in the mitigation of bushfire.
- Enable agencies to identify the need for, and target structure fire mitigation works/treatments.
- Identify locations with the potential for chemical involved fire to enable the assessment of risk and treatment effectiveness.
- Providing informed advice to the MEMPC and the RSFMPC with respect to fire management.
- The MFMP is used to inform agency planning across the relevant components of Prevention, Preparedness, Response and Recovery (PPRR).

Links to Other Plans

Primarily the 'links to other plans' table represents other agency/organisation plans relating to the PRRR spectrum.

Links to Organisations

Country Fire Authority: www.cfa.vic.gov.au

Department of Health and Human Services: www.dhhs.vic.gov.au

Department, Environment, Land, Water and Planning: www.delwp.vic.gov.au

Emergency Services Commissioner Victoria: www.emv.vic.gov.au

HVP Plantations: www.hvp.com.au

Municipal Association Victoria: www.mav.asn.au

Parks Victoria: www.parkweb.vic.gov.au

Baw Baw Shire Council: www.bawbawshire.vic.gov.au

VicRoads: www.vicroads.vic.gov.au



Tarago Reservoir

Part 5 – Fire Management Risk Strategies

The underlying guiding principle that drives fire management objectives at all levels is protection and preservation of life, property and the environment.

There are a range of standard fire management strategies and treatments that are applied across the state, region or municipality, and as such will not be listed against each identified asset in the Register of Assets at Risk or in the Multi Agency Works-plan. These standard fire management strategies and treatments are listed in the following sections below.

In addition, the Register of Assets at Risk has been separated into the three fire risk elements. Bushfire (or grassland fire), Structure and Chemical:

- Attachment A-1 Register of Assets at Risk – Bushfire
- Attachment A-2 Register of Assets at Risk – Structure Fire
- Attachment A-3 Register of Assets at Risk – Fire Involving Chemicals

Bushfire Treatments

A range of bushfire mitigation strategies and treatments exist that are applied consistently across the State and Municipality, these include;

- provisions in the Victorian Planning Scheme;
- Bushfire Management Overlays/Bushfire Prone Areas;
- provisions in the Building Code of Australia (BCA);
- compliance and enforcement of legislation;
- declared Fire Danger Period/prohibited period⁴ and restrictions;
- Total Fire Ban day declarations;
- community information and warnings;
- powerline hazard tree identification, management and reporting;
- Fire Hazard Inspection Program and issuing of Fire Prevention Notices;
- public awareness programs – multimedia communications;
- Roadside vegetation management by VicRoads, DELWP and municipal councils;
- Council patrols and inspections;
- emergency management signage;
- event management plans;
- routine asset maintenance; and
- Bushfire Attack Level (BAL) assessments for new buildings proposals.

Where the MFMPC has identified assets at risk from bushfire that require additional, specific treatments, these are listed in Attachment A-1 Register of Assets at Risk – Bushfire. This attachment identifies initial risk ratings using the Victorian Fire Risk Register – Bushfire (VFRR-B) data, with current treatments, then taken into account to establish a level of residual risk.

Individuals also need to understand their personal level of bushfire risk and undertake their own mitigation measures, including to prepare and plan for bushfire and act upon their plans when required.

Recommendations from the Victorian Bushfire Royal Commission (VBRC) into the 2009 Fires have re-focused on a number of existing strategies with enhanced activities such as;

- identifying hazard trees in relation to powerlines, refer Attachment C-1;
- Community Information Guides (CIG), refer Attachment C-2;
- Neighbourhood Safer Place – Place of Last Resort (NSP-PLR), refer Attachment C-3;
- Fire Refuges – none located in Baw Baw, refer Attachment C-4;
- increase of prescribed burning of public land; refer Multi Agency Works plan, Attachment B; and
- implement a systematic State-wide program of bushfire risk assessment for all roads and provision to ensure conformity with the obligations in Section 43⁵ of the CFA Act and with the objectives expressed in the VicRoads 1985 Code of Practice.

⁴ Forests Act 1958 – SECT 65 Enforcement of burning off etc. near State forest or national park

⁵ Country Fire Authority Act 1958 – SECT 43



Structure Fire Risk Treatments

Structural risk in the Baw Baw municipality consists of a mix of residential, commercial and industrial premises, with the largest concentrations in the large towns of Warragul and Drouin. Smaller towns such as Trafalgar, Yarragon, Longwarry and Neerim South contain mainly residential and commercial properties.

A considerable number of residential properties exist in remote locations throughout the municipality.

A range of strategies and treatments exist which are applied consistently across the state and municipality to reduce the occurrence and impact of structure fires. These include;

- provisions in the Victorian Building Act;
- provisions the Victorian Planning Scheme;
- compliance and enforcement of legislation;
- Council Essential Safety Measures Procedures and audit inspections;
- industry guidelines;
- Standards (i.e. electrical safety);
- engineered controls;
- fire service response planning and training;
- staff training;
- event permits and event management plans;
- targeted education programs; and
- public awareness programs – multimedia communications.

Where the MFMPC has identified assets at risk from structure fire that require additional, specific treatments, these are listed in Attachment A-2 Register of Assets at Risk – Structure Fire.



Photo courtesy of VicPol

Essential Safety Measures Procedures and Building Inspections

Baw Baw Shire Council is responsible under Section 212 of the *Building Act 1993*⁶ for the administration and enforcement of Parts 3, 4, 5, 7 and 8 of the Act and the *Building Regulations 2006* in its municipal district. This includes the Building Commission's Essential Safety Measures Maintenance Manual.

Council's role and obligations in ensuring essential safety measures are in place and operable is twofold:

- Council as a compliance authority
- The Building Act 1993 and the Building Regulations 2006 require Council to audit relevant buildings and to ensure appropriate essential safety measures are in place and being maintained.
- Council as an asset owner and manager
- Council has the responsibility as a building and asset manager to ensure buildings they manage have appropriate safety measures in place.

Fires Involving Chemicals Risk Treatments

A range of strategies and treatments exist that are applied consistently across the state and municipality for the storage and transport of chemicals which may be involved in a fire. These include;

- site specific plans;
- Australian Code for the Transport of Dangerous Goods by Road and Rail;
- Emergency Procedure Guides – Transport (AS 1678 series);
- Material Safety Data Sheets (MSDS);
- compliance and enforcement of legislation;
- industry guidelines;
- engineered controls;
- fire service response planning and training;
- staff training; and
- inspections.

⁶ [Building Act 1993](#)

Where the MFMPC has identified assets at risk from fires involving chemicals that require additional, specific treatments, these are listed in Attachment A-3 Register of Assets at Risk – Fires Involving Chemicals.



Parks Victoria constructed new walking track at Labertouche Bushland Reserve after the 2009 fires

Part 6 – Improvement, Plan Reporting and Review Process

Baw Baw Shire Council has a legislative responsibility under the EM Act to develop a MEMP, and under the CFA Act to develop and implement, as a sub plan of the MEMP, a Municipal Fire Management Plan (MFMP).

Audit Plan

For councils wholly or partly within the Country Area of Victoria, the MFMP will be audited in accordance with the requirements of the CFA Act 1958.

Plan Review and Update

The plan will be reviewed and updated annually by the MFMP. This review will take into account works completed, environmental changes and any additional risks. Significant changes must be approved by the committee and articulated through the MEMPC to Council for adoption.

The plan may also be reviewed;

- following significant incidents if required;
- as directed by the State or Regional Fire Management Planning Committees; or
- as required by legislation.

The MFMP will report quarterly to the MEMPC and the RSFMP.

Attachment A-1 Register of Assets at Risk - Bushfire

The Fire Danger Index (FDI) rating system takes account of four factors: temperature, relative humidity, wind speed and 'drought factor'. Traditionally the FDI has used a scale up to 150 for Grassland Fire and 100 for Forest fire, see charts below:

Fire Danger Rating	Forest FDI	Grassland FDI
Code Red	100 +	150 +
Extreme	75 - 99	100 - 149
Severe	50 - 74	50 - 99
Very high	25 - 49	25 - 49
High	12 - 24	12 - 24
Low to Moderate	0 - 11	0 - 11

VFR-B Asset ID	Asset Type	Description	Risk Category	Likely Scenario based on the McArthur Forest Fire Danger Indices (FFDI) rating of 100	Raw Risk Rating	Existing Treatments	Likelihood	Consequence	Residual Risk	Other	Treatment Recommendations	Treatment Priority	Detail/Comments
TBA	Cultural	Walhalla Goldfield Rail Line	Bushfire		Extreme	Same as for Economic							Committee of Management
TBA	Economic	Mount Baw Baw Alpine Resort				212 Routine Asset Site maintenance, Other 223 Roadside Veg Mngt, VicRoads. Main Neerim Road. 231 Burn Program, DELWP 409 EM Plan (site), Other				Yes	Review EM Plan		DELWP land manger
TBA	Human Settlement - SFP	Mount Baw Baw Alpine Resort				212 Routine Asset Site maintenance, Other 223 Roadside veg mngt, VicRoads. Main Neerim Rd from Drouin to Mount Baw Baw Tourist Rd. 223 Roadside Veg Mngt, VicRoads. Mount Baw Baw Tourist Rd from Main Neerim Rd to Noojee. 231 Burn Program, DELWP 409 EM Plan (site), Other							Land Manager - DELWP
6001	Human Settlement - SFP	Tanjil South PS	Bushfire	Fire impacting from external grasslands	High	212 Routine asset site maintenance, DEECD 407 EM Plan (site), DEECD	Unlikely	Major	Medium	NO			
6021	Human Settlement - Residential	Drouin	Bushfire	Fire impacting town from external grasslands	Low	107 FRV, CFA 209 Routine maintenance of rail line, Utility 205 Fuel hazard mngt, Other 223 Roadside veg mngt, VicRoads. Princes Hwy, full width cut Fence line to fence line. 404 FP & hyd installation & maintenance, LGA	Unlikely	Moderate	Low	NO			
6022	Human Settlement - Residential	Drouin Interface	Bushfire	Fire impacting from external grasslands	High	107 FRV, CFA 205 Fuel hazard mngt, Other 209 Routine maintenance of rail line, Utility 404 FP & hyd installation & maintenance, LGA	Possible	Moderate	Medium	NO			Robin Hood Estate access & egress issues.

VFRR-B Asset ID	Asset Type	Description	Risk Category	Likely Scenario based on the McArthur Forest Fire Danger Indices (FFDI) rating of 100	Raw Risk Rating	Existing Treatments	Likelihood	Consequence	Residual Risk	Other	Treatment Recommendations	Treatment Priority	Detail/Comments
6030	Human Settlement - SFP	Labertouche PS	Bushfire	Fire impacting from external grasslands	High	100 Community education/engagement, CFA 212 Routine Asset Site maintenance, Other 407 EM Plan (site), DEECD	Unlikely	Major	Medium	NO			
6031	Human Settlement - SFP	Drouin West PS	Bushfire	Fire impacting from external grasslands	High	100 Community education/engagement, CFA 212 Routine Asset Site maintenance, Other 407 EM Plan (site), DEECD	Unlikely	Major	Medium	NO			
6033	Human Settlement - SFP	Drouin SC	Bushfire	Fire impacting from external grasslands	Low	100 Community education/engagement, CFA 212 Routine Asset Site maintenance, Other 407 EM Plan (site), DEECD	Unlikely	Moderate	Low	NO			Buffeted by Town
6034	Human Settlement - SFP	Chairo Christian School - Drouin East Campus	Bushfire	Fire impacting from external grasslands	High	212 Routine Asset Site maintenance, Other 407 EM Plan (site), DEECD	Unlikely	Major	Medium	NO			
6035	Human Settlement - SFP	Chairo Christian School - Drouin Main Campus	Bushfire	Fire impacting from external grasslands	High	212 Routine Asset Site maintenance, Other 407 EM Plan (site), DEECD	Unlikely	Major	Medium	NO			
6038	Human Settlement - SFP	Drouin South PS	Bushfire	Fire impacting from external grasslands	High	100 Community education/engagement, CFA 212 Routine Asset Site maintenance, Other 407 EM Plan (site), DEECD	Unlikely	Major	Medium	NO			
6039	Human Settlement - SFP	Ripplebrook PS	Bushfire	Fire impacting from external grasslands	High	212 Routine Asset Site maintenance, Other 407 EM Plan (site), DEECD	Unlikely	Major	Medium	NO			
6040	Human Settlement - SFP	Athlone PS	Bushfire	Fire impacting from external grasslands	High	212 Routine Asset Site maintenance, Other 407 EM Plan (site), DEECD 405 Emergency water supply, LGA	Unlikely	Major	Medium	NO			Static water supply located at Athlone Hall
6041	Human Settlement - SFP	Drouin SC - Blackwood Annexe	Bushfire	Fire impacting from external grass & woodlands	High	212 Routine Asset Site maintenance, Other 407 EM Plan (site), DEECD	Unlikely	Major	Medium	NO			
6042	Human Settlement - SFP	Lardner and District PS	Bushfire	Fire impacting from external grasslands	High	212 Routine Asset Site maintenance, Other 407 EM Plan (site), DEECD	Unlikely	Major	Medium	NO			
6044	Human Settlement - SFP	Bona Vista PS	Bushfire	Fire impacting from external grasslands	High	100 Community education/engagement, CFA 212 Routine Asset Site maintenance, Other 407 EM Plan (site), DEECD	Unlikely	Major	Medium	NO			
6047	Human Settlement - Residential	Noojee	Bushfire	Fire impacting town from external grasslands	Extreme	107 FRV, CFA 100 Community education/engagement, CFA 113 Tourism Fire Awareness Program, LGA 223 Roadside veg mngt, VicRoads. Main Neerim Rd from Drouin to Mount Baw Baw Tourist Rd. 231 Burn Program, DELWP 404 FP & hyd installation & maintenance, LGA 405 Emergency water supply, CFA 416 Fire Access Rd & Trk, DELWP 420 CIG, CFA	Possible	Catastrophic	Very High	Yes	Personal evacuation plans Community evacuation exercise Community Siren	1	High vulnerability. Potential life loss evacuation planning needed

VFRR-B Asset ID	Asset Type	Description	Risk Category	Likely Scenario based on the McArthur Forest Fire Danger Indices (FFDI) rating of 100	Raw Risk Rating	Existing Treatments	Likelihood	Consequence	Residual Risk	Other	Treatment Recommendations	Treatment Priority	Detail/Comments
6048	Human Settlement - Other	Tanjil Bren	Bushfire	Fire impacting town from external wet & damp forest	Extreme	106 CFG, CFA 107 FRV, CFA 113 Tourism Fire Awareness Program, LGA 231 Burn Program, DELWP 404 FP & hyd installation & maintenance, LGA 405 Emergency water supply, Govt agencies 416 Fire Access Rd & Trk, DELWP 420 CIG, CFA	Possible	Major	High	Yes	Personal evacuation plans	3	Remote, high vulnerability.
6049	Human Settlement - Residential	Erica and Rawson	Bushfire	Fire impacting town from external dry & damp forest	Extreme	106 CFG, CFA 107 FRV, CFA 109 Annual door knock with fire safety package, CFA local brigade. 113 Tourism Fire Awareness Program, LGA 231 Burn Program, DELWP 404 FP & hyd installation & maintenance, LGA 405 Emergency water supply, Govt agencies 416 Fire Access Rd & Trk, DELWP 420 CIG, CFA	Likely	Moderate	High	Yes	Personal evacuation plans	3	
6054	Human Settlement - SFP	Caringal Scout Camp, Telbit Rd, Tyres Junction	Bushfire	Fire impacting town from external dry forest	Extreme	212 Routine Asset Site maintenance, Other	Likely	Moderate	High	Yes	407 EM Plan (site)	1	Unaware of plan
6055	Human Settlement - Residential	Walhalla	Bushfire	Fire impacting town from external dry forest	Extreme	106 CFG, CFA 107 FRV, CFA 109 Annual door knock with fire safety package, CFA local brigade. 113 Tourism Fire Awareness Program, LGA 231 Burn Program, DELWP 209 Routine maintenance of rail line, Utility 405 Emergency water supply, LGA 416 Fire Access Rd & Trk, DELWP	Possible	Major	High	Yes	Personal evacuation plans	2	High vulnerability. Inadequate water. Economic loss/regional tourism strategies.
6058	Human Settlement - Other	Neerim Junction and Nayook	Bushfire	Fire impacting town from external grasslands	Medium	106 CFG, CFA 107 FRV, CFA 113 Tourism Fire Awareness Program, LGA 202 Burn Program, CFA/DELWP/LGA 223 Roadside veg mngt, VicRoads. Main Neerim Rd from Drouin to Mount Baw Baw Tourist Rd. 405 Emergency water supply, Govt Agencies	Possible	Moderate	Medium	NO			Low vulnerability
6059	Human Settlement - SFP	Rubicon Outdoor Centre - Nayook Camp, 610 Nayook-Powelltown Rd Glen Waverley High School Camping Ground, 530 Nayook-Powelltown Rd, Nayook	Bushfire	Fire impacting from external dry forest.	Extreme	113 Tourism Fire Awareness Program, LGA 231 Burn Program, DELWP 212 Routine Asset Site maintenance, Other 405 Emergency water supply, 407 EM Plan (site)	Possible	Moderate	Medium	Yes	217 FMZ, DELWP	4	
6060	Human Settlement - SFP	Forest Edge Camp, McKenzie's Rd, Neerim East	Bushfire	Fire impacting from external dry forest in the south.	High	212 Routine Asset Site maintenance, Other 404 FP & hyd installation & maintenance, LGA 409 EM Plan (site), Other 407 EM Plan (site), DEECD	Possible	Moderate	Medium	NO			Youth camp

VFRR-B Asset ID	Asset Type	Description	Risk Category	Likely Scenario based on the McArthur Forest Fire Danger Indices (FFDI) rating of 100	Raw Risk Rating	Existing Treatments	Likelihood	Consequence	Residual Risk	Other	Treatment Recommendations	Treatment Priority	Detail/Comments
6061	Human Settlement - Residential	Neerim South	Bushfire	Fire impacting town from external grasslands	Medium	106 CFG, CFA 107 FRV, CFA 113 Tourism Fire Awareness Program, LGA 223 Roadside veg mngt, VicRoads. Main Neerim Rd from Drouin to Mount Baw Baw Tourist Rd. 231 Burn Program, DELWP 404 FP & hyd installation & maintenance, LGA	Possible	Moderate	Medium	NO			Low vulnerability
6064	Human Settlement - SFP	Neerim South Caravan Park	Bushfire	Fire from internal source & potential impact from grass fire.	Very High	212 Routine Asset Site maintenance, Other 303 Patrol/Inspection, LGA 409 EM Plan (site), Other	Unlikely	Moderate	Low	NO			
6065	Human Settlement - Other	Jindivick	Bushfire	Fire impacting town from external vegetation.	Medium	107 FRV, CFA 405 Emergency water supply, CFA	Possible	Moderate	Medium	NO			Low vulnerability
6066	Human Settlement - Other	Glen Cromie Caravan Park, Drouin West	Bushfire	Fire impacting from external dry forest.	Very High	212 Routine Asset Site maintenance, Other 303 Patrol/Inspection, LGA 409 EM Plan (site), Other	Possible	Moderate	Medium	NO			Burnt out dry sclerophyll forest in Feb 2009.
6067	Human Settlement - SFP	Brighton Grammar School Camping Ground, Bunyip State Park	Bushfire	Fire impacting from external dry forest.	Very High	Reevaluate in 2013							Burnt out in Feb 2009. Location - Forest Rd, Labertouche Nth.
6068	Human Settlement - SFP	Settlers Rest Caravan Park, Longwarry North	Bushfire	Fire impacting from external grasslands.	Very High	212 Routine Asset Site maintenance, Other 303 Patrol/Inspection, LGA 409 EM Plan (site), Other	Possible	Moderate	Medium	NO			EM Plan confirmed
6069	Human Settlement - Residential	Longwarry	Bushfire	Fire impacting town from external grasslands & scrub in low lying areas.	Medium	107 FRV, CFA 109 Public awareness, CFA 202 Burn Program, CFA/DELWP/LGA 209 Routine maintenance of rail line, Utility 223 Roadside veg mngt, VicRoads. Princes Hwy, full width cut Fence line to fence line. 404 FP & hyd installation & maintenance, LGA	Unlikely	Moderate	Low	NO			Old farming properties with new residential areas.
6077	Human Settlement - SFP	Lardner Park Farm World vacant	Bushfire	Fire impacting from external grasslands.	High	212 Routine Asset Site maintenance, Other 409 EM Plan (site), Other	Unlikely	Minor	Low	NO			
6077	Human Settlement - SFP	Lardner Park Farm World with event	Bushfire	Fire starts within Park area	High	212 Routine Asset Site maintenance, Other 409 EM Plan (site), Other (event mngt)	Unlikely	Minor	Low	NO			Various events held during FDP.
6078	Human Settlement - SFP	Ellinbank Research Station DELWP	Bushfire	Fire impacting from external grasslands.	High	212 Routine asset site maintenance DELWP 409 EM Plan (site), DELWP 432 EM Plan, LGA	Unlikely	Minor	Low	NO			
6093	Human Settlement - Residential	Buln Buln	Bushfire	Fire impacting town from external grasslands.	Medium	107 FRV, CFA 203 Crown land fuel reduction, DELWP 404 FP & hyd installation & maintenance, LGA	Unlikely	Moderate	Low	NO			Low vulnerability

VFRR-B Asset ID	Asset Type	Description	Risk Category	Likely Scenario based on the McArthur Forest Fire Danger Indices (FFDI) rating of 100	Raw Risk Rating	Existing Treatments	Likelihood	Consequence	Residual Risk	Other	Treatment Recommendations	Treatment Priority	Detail/Comments
6094	Human Settlement - Residential	Warragul North Interface	Bushfire	Fire impacting town from external grasslands.	Low	107 FRV, CFA 205 Fuel hazard mngt, Other 209 Routine maintenance of rail line, Utility 223 Roadside veg mngt, VicRoads. Princes Hwy, full width cut Fence line to fence line. 404 FP & hyd installation & maintenance, LGA	Unlikely	Moderate	Low	NO			Polygon includes new estates in the west.
6095	Human Settlement - Residential	Warragul South	Bushfire	Fire impacting town from external grasslands.	Medium	107 FRV, CFA 202 Burn Program, CFA/DELWP/LGA 205 Fuel hazard mngt, Other 209 Routine maintenance of rail line, Utility 223 Roadside veg mngt, VicRoads. Princes Hwy, full width cut Fence line to fence line. 404 FP & hyd installation & maintenance, LGA	Unlikely	Moderate	Low	NO			Low vulnerability
6096	Human Settlement - Residential	Darnum	Bushfire	Fire impacting town from external grasslands.	Medium	106 CFG, CFA 107 FRV, CFA 110 Public Awareness, LGA 209 Routine maintenance of rail line, Utility 223 Roadside veg mngt, VicRoads. Princes Hwy, full width cut Fence line to fence line. 404 FP & hyd installation & maintenance, LGA	Unlikely	Moderate	Low	NO			
6097	Human Settlement - Residential	Yarragon	Bushfire	Fire impacting town from external grasslands.	Medium	106 CFG, CFA 107 FRV, CFA 110 Public Awareness, LGA 209 Routine maintenance of rail line, Utility 223 Roadside veg mngt, VicRoads. Princes Hwy, full width cut Fence line to fence line. 404 FP & hyd installation & maintenance, LGA	Unlikely	Moderate	Low	NO			Low vulnerability
6098	Human Settlement - Residential	Nilma	Bushfire	Fire impacting town from external grasslands.	Medium	107 FRV, CFA 106 CFG, CFA 209 Routine maintenance of rail line, Utility 223 Roadside veg mngt, VicRoads. Princes Hwy, full width cut Fence line to fence line. 404 FP & hyd installation & maintenance, LGA	Unlikely	Moderate	Low	NO			
6099	Human Settlement - Residential	Trafalgar	Bushfire	Fire impacting town from external grasslands.	Medium	106 CFG, CFA 107 FRV, CFA 110 Public Awareness, LGA 209 Routine maintenance of rail line, Utility 223 Roadside veg mngt, VicRoads. Princes Hwy, full width cut Fence line to fence line. 404 FP & hyd installation & maintenance, LGA	Unlikely	Moderate	Low	NO			Low vulnerability
6100	Human Settlement - Other	Narracan	Bushfire	Fire impacting town from external grasslands.	High	106 CFG, CFA 107 FRV, CFA	Unlikely	Moderate	Low	NO			Low vulnerability
6101	Human Settlement - Other	Coalville	Bushfire	Fire impacting town from external grasslands.	High	231 Burn Program, DELWP 223 Roadside veg mngt, VicRoads. Princes Hwy, full width cut Fence line to fence line.	Possible	Moderate	Medium	NO			

VFRR-B Asset ID	Asset Type	Description	Risk Category	Likely Scenario based on the McArthur Forest Fire Danger Indices (FFDI) rating of 100	Raw Risk Rating	Existing Treatments	Likelihood	Consequence	Residual Risk	Other	Treatment Recommendations	Treatment Priority	Detail/Comments
6102	Human Settlement - Residential	Thorpdale	Bushfire	Fire impacting town from external grasslands & scrub along river.	Medium	107 FRV, CFA 404 FP & hyd installation & maintenance, LGA	Unlikely	Moderate	Low	NO			Low vulnerability
6103	Human Settlement - Residential	Willow Grove	Bushfire	Fire impacting town from external grasslands.	High	107 FRV, CFA 110 Public awareness, LGA 202 Burn Program, CFA/DELWP/LGA 231 Burn Program, DELWP 223 Roadside veg mngt, VicRoads. Willowgrove Rd from Willow Grove to Trafalgar. 404 FP & hyd installation & maintenance, LGA	Possible	Moderate	Medium	NO			Blue Rock Dam buffer zone not managed.
6104	Human Settlement - Other	Westbury	Bushfire	Fire impacting town from external grasslands.	Medium	106 CFG, CFA 107 FRV, CFA 110 Public awareness, LGA 231 Burn Program, DELWP 405 Emergency water supply, Govt Agencies	Possible	Moderate	Medium	NO			CFG Current. Low vulnerability.
6105	Human Settlement - Other	Aberfeldy	Bushfire	Fire impacting town from external dry forest.	Extreme	106 CFG, CFA 109 Public awareness, CFA 231 Burn Program, DELWP 405 Emergency water supply, Govt Agencies 416 Fire Access Rd & Trk, DELWP	Likely	Moderate	High	Yes	Personal evacuation plans	1	Isolated/scattered Community, high vulnerability. Direct fire impact Jan 2013. Significant losses, one fatality.
6108	Human Settlement - SFP	Thomson Work Centre	Bushfire		Extreme	409 EM Plan, Melbourne Water	Possible	Minor	Low	NO			Approx. 10 employees.
6109	Human Settlement - SFP	Tarago Reservoir Treatment Plant	Bushfire		High	214 Routine asset site maintenance, Utility							Approx. 10 people at WTP
6110	Human Settlement - SFP	Tarago Work Centre	Bushfire		Very High	214 Routine asset site maintenance, Utility							
6111	Human Settlement - Other	Moondarra	Bushfire	Fire impacting town from external dry forest and ember attack.	Extreme	109 Annual door knock with fire safety package, CFA local brigade. 231 Burn Program, DELWP 416 Fire Access Rd & Trk, DELWP	Possible	Moderate	Medium	NO			High vulnerability
6112	Human Settlement - SFP	Rawson PS & Rawson After School Care	Bushfire	Same as for Erica & Rawson Townships	High	213 Routine asset site maint. School 407 EM Plan (site), DEECD	Likely	Moderate	High	NO			
6114	Human Settlement - SFP	Noojee PS	Bushfire	Same as Noojee Township	High	213 Routine asset site maint. School 407 EM Plan (site), DEECD	Possible	Catastrophic	Very High	NO			
6115	Human Settlement - SFP	Neerim District SC	Bushfire	Same as Neerim South	High	213 Routine asset site maint. School 407 EM Plan (site), DEECD	Possible	Moderate	Medium	NO			
6116	Human Settlement - SFP	Neerim South PS	Bushfire	Same as Neerim South	High	213 Routine asset site maint. School 407 EM Plan (site), DEECD	Possible	Moderate	Medium	NO			

VFRR-B Asset ID	Asset Type	Description	Risk Category	Likely Scenario based on the McArthur Forest Fire Danger Indices (FFDI) rating of 100	Raw Risk Rating	Existing Treatments	Likelihood	Consequence	Residual Risk	Other	Treatment Recommendations	Treatment Priority	Detail/Comments
6117	Human Settlement - SFP	Jindivick PS	Bushfire	Same as Jindivick Township	High	213 Routine asset site maint. School 407 EM Plan (site), DEECD	Possible	Moderate	Medium	NO			
6118	Human Settlement - SFP	Longwarry PS	Bushfire	Same as Longwarry Township	High	213 Routine asset site maint. School 407 EM Plan (site), DEECD	Possible	Moderate	Low	NO			
6119	Human Settlement - SFP	Drouin PS	Bushfire	Same as Drouin Township	Low	213 Routine asset site maint. School 407 EM Plan (site), DEECD	Unlikely	Moderate	Low	NO			
6120	Human Settlement - SFP	St Ita's Catholic PS, Drouin	Bushfire	Same as Drouin Township	Low	213 Routine asset site maint. School 407 EM Plan (site), DEECD	Unlikely	Moderate	Low	NO			
6121	Human Settlement - SFP	Nilma PS	Bushfire	Same as Nilma Township	High	213 Routine asset site maint. School 407 EM Plan (site), DEECD	Unlikely	Moderate	Low	NO			
6122	Human Settlement - SFP	The Summit Adventure Camp, Trafalgar East	Bushfire	Fire impacting town from external dry forest, grassland & plantation.	Very High	212 Routine Asset Site maintenance, Other 409 EM Plan (site), Other	Unlikely	Moderate	Low	NO			The Summit Park, Trafalgar East, SVSE Map 6828 Grid Ref K4
6123	Human Settlement - Other	Trafalgar East	Bushfire	Fire impacting settlement from external dry forest.	High	223 Roadside veg mngt, VicRoads. Princes Hwy, full width cut Fence line to fence line. 303 Patrol/Inspection, LGA	Possible	Minor	Low	NO			Low vulnerability. Small holdings, grazed
6124	Human Settlement - Other	Crossover	Bushfire	Fire impacting settlement from external grassland & dry woodland.	Extreme	231 Burn Program, DELWP	Possible	Minor	Low	NO			VFRR-B to review Raw Risk Rating, separation distance figure possibly incorrect giving a too high rating. Small farming community
6125	Human Settlement - Other	Neerim	Bushfire	Fire impacting settlement from external grassland.	High	106 CFG, CFA 223 Roadside veg mngt, VicRoads. Main Neerim Rd from Drouin to Mount Baw Baw Tourist Rd. 231 Burn Program, DELWP	Possible	Minor	Low	NO			Small farming community 2 x CFG Current
6126	Human Settlement - Other	Hill End	Bushfire	Fire impacting settlement from external grassy woodlands.	Very High	106 CFG, CFA 231 Burn Program, DELWP 405 Emergency water supply, Govt agencies	Possible	Minor	Low	NO			VFRR-B to review Raw Risk Rating, vulnerability rating possibly incorrect giving a too high rating. Dairy farming -grazed with pockets of bush. No reticulated water.
6127	Human Settlement - Other	Robin Hood	Bushfire	Fire impacting from external grasslands	Medium	303 Patrol/inspection, LGA	Possible	Minor	Low	NO			
6128	Human Settlement - Other	Rokeby	Bushfire	Fire impacting town from external grassy woodlands	Medium	303 Patrol/inspection, LGA	Possible	Minor	Low	NO			CFG Current
6129	Human Settlement - SFP	Darnum PS	Bushfire	Same as Darnum Township	High	213 Routine Asset Site Maint. School 407 EM Plan (site), DEECD	Unlikely	Moderate	Low	NO			

VFRB Asset ID	Asset Type	Description	Risk Category	Likely Scenario based on the McArthur Forest Fire Danger Indices (FFDI) rating of 100	Raw Risk Rating	Existing Treatments	Likelihood	Consequence	Residual Risk	Other	Treatment Recommendations	Treatment Priority	Detail/Comments
6130	Human Settlement - SFP	St Joseph's PS, Warragul	Bushfire	Same as Warragul South	High	213 Routine asset site maint. School 407 EM Plan (site), DEECD	Unlikely	Moderate	Low	NO			
6131	Human Settlement - SFP	Marist Sion SC, Warragul	Bushfire	Same as Warragul South	High	213 Routine asset site maint. School 407 EM Plan (site), DEECD	Unlikely	Moderate	Low	NO			
6132	Human Settlement - SFP	Warragul Regional College	Bushfire	Same as Warragul South	High	213 Routine asset site maint. School 407 EM Plan (site), DEECD	Unlikely	Moderate	Low	NO			
6133	Human Settlement - SFP	Education Centre Gippsland Community College, Warragul	Bushfire	Same as Warragul South	High	213 Routine asset site maint. School 407 EM Plan (site), DEECD	Unlikely	Moderate	Low	NO			
6134	Human Settlement - SFP	Central Gippsland TAFE, Warragul	Bushfire	Same as Warragul South	High	213 Routine asset site maint. School 407 EM Plan (site), DEECD	Unlikely	Moderate	Low	NO			
6135	Human Settlement - SFP	Warragul & District Specialist School	Bushfire	Not at threat of bushfire	Low	213 Routine asset site maint. School 407 EM Plan (site), DEECD			Low	NO			
6136	Human Settlement - SFP	Warragul PS	Bushfire	Not at threat of bushfire	Low	213 Routine asset site maint. School 407 EM Plan (site), DEECD			Low	NO			
6137	Human Settlement - SFP	St Pauls Grammar, Sutton St, Warragul	Bushfire	Not at threat of bushfire	Low	213 Routine asset site maint. School 407 EM Plan (site), DEECD			Low	NO			
6138	Human Settlement - SFP	St Pauls Grammar, Bowen St, Warragul	Bushfire	Not at threat of bushfire	High	213 Routine asset site maint. School 407 EM Plan (site), DEECD			Low	NO			Reassess VFRB rating i.e. should be Low. Site is a LGA Relief Centre.
6139	Human Settlement - SFP	Warragul North PS	Bushfire	Not at threat of bushfire	Low	213 Routine asset site maint. School 407 EM Plan (site), DEECD			Low	NO			
6141	Human Settlement - SFP	Thorpdale PS	Bushfire	Same as Thorpdale Township	High	100 Community education/engagement, CFA 213 Routine asset site maint. School 407 EM Plan (site), DEECD	Unlikely	Moderate	Low	NO			
6142	Human Settlement - SFP	Narracan PS	Bushfire	Same as Narracan Township	Very High	100 Community education/engagement, CFA 213 Routine asset site maint. School 407 EM Plan (site) DEECD	Unlikely	Moderate	Low	NO			
6143	Human Settlement - SFP	Trafalgar PS	Bushfire	Not at threat of bushfire	Low	213 Routine asset site maint. School 407 EM Plan (site), DEECD			Low	NO			
6144	Human Settlement - SFP	Trafalgar SC	Bushfire	Not at threat of bushfire	Low	213 Routine asset site maint. School 407 EM Plan (site), DEECD			Low	NO			
6145	Human Settlement - SFP	St Josephs, Trafalgar	Bushfire	Same as Trafalgar Interface	High	213 Routine asset site maint. School 407 EM Plan (site), DEECD	Unlikely	Moderate	Low	NO			
6146	Human Settlement - SFP	Yarragon PS	Bushfire	Same as Yarragon Township	High	213 Routine asset site maint. School 407 EM Plan (site), DEECD	Unlikely	Moderate	Low	NO			
6147	Human Settlement - SFP	Willow Grove PS	Bushfire	Same as Willow Grove Township	Very High	213 Routine asset site maint. School 407 EM Plan (site), DEECD	Possible	Moderate	Medium	NO			

VFRR-B Asset ID	Asset Type	Description	Risk Category	Likely Scenario based on the McArthur Forest Fire Danger Indices (FFDI) rating of 100	Raw Risk Rating	Existing Treatments	Likelihood	Consequence	Residual Risk	Other	Treatment Recommendations	Treatment Priority	Detail/Comments
6148	Human Settlement - SFP	Bowen Park Kindergarten, Warragul	Bushfire	Same as Warragul North Interface	High	213 Routine asset site maint. School 407 EM Plan (site), DEECD	Unlikely	Moderate	Low	NO			
6149	Human Settlement - SFP	Yarragon Pre-school	Bushfire	Same as Yarragon Township	High	213 Routine asset site maint. School 407 EM Plan (site), DEECD	Unlikely	Moderate	Low	NO			
6150	Human Settlement - SFP	Willow Grove Kindergarten	Bushfire	Same as Willow Grove Township	High	213 Routine asset site maint. School 407 EM Plan (site), DEECD	Possible	Moderate	Medium	NO			
6151	Human Settlement - SFP	Warragul Community Pre-school	Bushfire	Not at risk of bushfire	Low	213 Routine asset site maint. School 407 EM Plan (site), DEECD			Low	NO			
6152	Human Settlement - SFP	Trafalgar Kindergarten	Bushfire	Not at risk of bushfire	Low	213 Routine asset site maint. School 407 EM Plan (site), DEECD			Low	NO			
6153	Human Settlement - SFP	Thorpdale & District Kindergarten	Bushfire	Same as Thorpdale Township	High	213 Routine asset site maint. School 407 EM Plan (site), DEECD	Unlikely	Moderate	Low	NO			
6154	Human Settlement - SFP	St Andrews Kindergarten, Warragul	Bushfire	Not at risk of bushfire	Low	213 Routine asset site maint. School 407 EM Plan (site), DEECD			Low	NO			
6155	Human Settlement - SFP	Oak St, Kindergarten, Drouin	Bushfire	Same as Drouin Township	Low	213 Routine asset site maint. School 407 EM Plan (site), DEECD	Unlikely	Moderate	Low	NO			
6156	Human Settlement - SFP	Mary Beck Pre-school, Neerim South	Bushfire	Same as Neerim South Townships	High	213 Routine asset site maint. School 407 EM Plan (site), DEECD	Possible	Moderate	Medium	NO			
6157	Human Settlement - SFP	Grace Berglund Kindergarten, Warragul	Bushfire	Not at risk of bushfire	Low	213 Routine asset site maint. School 407 EM Plan (site), DEECD			Low	NO			
6158	Human Settlement - SFP	Erica Pre-school	Bushfire	Same as Erica Township	High	407 EM Plan (site), DEECD 213 Routine asset site maint. School	Likely	Moderate	High	NO			
6159	Human Settlement - SFP	Dulcie Harris Kindergarten, Warragul	Bushfire	Not at risk of bushfire	Low	213 Routine asset site maint. School 407 EM Plan (site), DEECD			Low	NO			
6160	Human Settlement - SFP	Drouin Kindergarten	Bushfire	Same as Drouin Interface	High	213 Routine asset site maint. School 407 EM Plan (site), DEECD	Possible	Moderate	Medium	NO			
6200	Economic	Agriculture-Dairy	Bushfire	Properties in fire affected areas only.	Very High	104 Agricultural management, CFA/DELWP	Possible	Moderate	Medium				Transport of milk in and out needs to be considered in fire affected areas
6200	Economic	Agriculture-Vineyards	Bushfire	Properties in fire affected areas only.	High	231 Burn Program, DELWP	Possible	Moderate	Medium				
6201	Economic	Browns Mill, Noojee	Bushfire	Same as township	High	212 Routine Asset Site maintenance, Other 405 Emergency water supply, Govt Agencies 409 EM Plan (site), Other							Dry and wet timber mill

VFRR-B Asset ID	Asset Type	Description	Risk Category	Likely Scenario based on the McArthur Forest Fire Danger Indices (FFDI) rating of 100	Raw Risk Rating	Existing Treatments	Likelihood	Consequence	Residual Risk	Other	Treatment Recommendations	Treatment Priority	Detail/Comments
6202	Economic	Mount Toorongo Communications Tower	Bushfire	Surrounded by forest	Medium	231 Burn Program, DELWP 203 Crown land fuel reduction, DELWP 221 Powerline clearance, Telstra							SMR Emergency services Communications site
6203	Economic	Walhalla Goldfield Rail Line	Bushfire	Surrounded by forest	High	100 Community education/engagement, CFA 217 FMZ, DELWP 409 EM Plan (site), Other	Possible	Minor	Low	NO			
6205	Economic	Neerim Junction Communications Tower	Bushfire	Surrounded by grassed grassland	Low	212 Routine Asset Site maintenance, Other	Unlikely	Moderate	Low	NO			Emergency Communications
6208	Economic	Longwarry Food Park	Bushfire	Same as township	Low	212 Routine Asset Site maintenance, Other 409 EM Plan (site), Other	Unlikely	Moderate	Low	NO			
6211	Economic	Lardner Park Major Events	Bushfire	Surrounded by grassed grassland	Low	212 Routine Asset Site maintenance, Other 409 EM Plan (site), Other	Unlikely	Moderate	Low	NO			Event site
6212	Economic	Ellinbank Research Station DELWP	Bushfire	Surrounded by grassed grassland	Medium	212 Routine Asset Site maintenance, Other 409 EM Plan (site), Other	Unlikely	Moderate	Low	NO			
6213	Economic	Gippsland Rail Line	Bushfire	Surrounded by grassland	Very High	209 Routine maintenance of rail line, Utility	Unlikely	Minor	Low	NO			V/Line
6214	Economic	Hardwood Plantations	Bushfire		Extreme	205 Fuel hazard mngt, Other 231 Burn Program, DELWP 300 Ignition mngt, HVP Emergency water supply, 409 EM Plan (Site), Other 413 Fire Access Rd/Trk, Council	Likely	Moderate	High				
6215	Economic	Softwood Plantations	Bushfire		Extreme	205 Fuel hazard mngt, Other 231 Burn Program, DELWP 300 Ignition mngt, HVP Emergency water supply, 409 EM Plan (site), Other 413 Fire Access Rd/Trk, Council	Likely	Moderate	High				
6216	Economic	Drouin WPS	Bushfire	Need to discuss with Water Authority including confirmation of Treatments and Residual Risk	Low	300 Ignition mngt, HVP Emergency water supply, 409 EM Plan (site), Other 413 Fire Access Rd/Trk, Council 400 Fire Protection Plan, Other 406 EM Plan (site), Utility			Low	NO			Gippsland Water
6217	Economic	Drouin West WWTP	Bushfire	Need to discuss with Water Authority including confirmation of Treatments and Residual Risk	Medium	103 Community ed/engagement, Utility 206 Fire haz mngt, Utility 214 Routine asset site maintenance, Utility 226 Roadside veg mngt, Private 400 Fire Protection Plan, Other 406 EM Plan (site), Utility							Gippsland Water

VFRR-B Asset ID	Asset Type	Description	Risk Category	Likely Scenario based on the McArthur Forest Fire Danger Indices (FFDI) rating of 100	Raw Risk Rating	Existing Treatments	Likelihood	Consequence	Residual Risk	Other	Treatment Recommendations	Treatment Priority	Detail/Comments
6219	Economic	Willow Grove WTP	Bushfire	Need to discuss with Water Authority including confirmation of Treatments and Residual Risk	Medium	103 Community ed/engagement, Utility 206 Fire haz mngt, Utility 214 Routine asset site maintenance, Utility 226 Roadside veg mngt, Private 400 Fire Protection Plan, Other 406 EM Plan (site), Utility							Gippsland Water
6222	Economic	Rawson WTP	Bushfire	Need to discuss with Water Authority including confirmation of Treatments and Residual Risk	Medium	103 Community ed/engagement, Utility 206 Fire haz mngt, Utility 214 Routine asset site maintenance, Utility 226 Roadside veg mngt, Private 400 Fire Protection Plan, Other 406 EM Plan (site), Utility							Gippsland Water. Last burnt 2009.
6223	Economic	Rawson WWTP	Bushfire	Need to discuss with Water Authority including confirmation of Treatments and Residual Risk	Medium	103 Community ed/engagement, Utility 206 Fire haz mngt, Utility 214 Routine asset site maintenance, Utility 226 Roadside veg mngt, Private 400 Fire Protection Plan, Other 406 EM Plan (site), Utility							Gippsland Water
6225	Economic	Neerim South (and Noojee) WTP	Bushfire	Need to discuss with Water Authority including confirmation of Treatments and Residual Risk	Medium	103 Community ed/engagement, Utility 206 Fire haz mngt, Utility 214 Routine asset site maintenance, Utility 226 Roadside veg mngt, Private 400 Fire Protection Plan, Other 406 EM Plan (site), Utility							Gippsland Water Will impact Noojee
6226	Economic	Tarago Dam WPS	Bushfire	Need to discuss with Water Authority including confirmation of Treatments and Residual Risk	Low	103 Community ed/engagement, Utility 206 Fire haz mngt, Utility 214 Routine asset site maintenance, Utility 226 Roadside veg mngt, Private 400 Fire Protection Plan, Other 406 EM Plan (site), Utility			Low	NO			Gippsland Water
6227	Economic	Neerim South WWTP	Bushfire	Need to discuss with Water Authority including confirmation of Treatments and Residual Risk	Medium	103 Community ed/engagement, Utility 206 Fire haz mngt, Utility 214 Routine asset site maintenance, Utility 226 Roadside veg mngt, Private 400 Fire Protection Plan, Other 406 EM Plan (site), Utility							Gippsland Water
6228	Economic	Buln Buln HL WPS	Bushfire	Need to discuss with Water Authority including confirmation of Treatments and Residual Risk		103 Community ed/engagement, Utility 206 Fire haz mngt, Utility 214 Routine asset site maintenance, Utility 226 Roadside veg mngt, Private 400 Fire Protection Plan, Other 406 EM Plan (site), Utility							Gippsland Water
6229	Economic	Buln Buln High Level Tank	Bushfire	Need to discuss with Water Authority including confirmation of Treatments and Residual Risk	Low	103 Community Ed/Engagement, Utility 206 Fire Haz Mngt, Utility 214 Routine Asset Site maintenance, Utility 226 Roadside Veg Mngt, Private 406 EM Plan (site), Utility			Low	NO			Gippsland Water

VFRR-B Asset ID	Asset Type	Description	Risk Category	Likely Scenario based on the McArthur Forest Fire Danger Indices (FFDI) rating of 100	Raw Risk Rating	Existing Treatments	Likelihood	Consequence	Residual Risk	Other	Treatment Recommendations	Treatment Priority	Detail/Comments
6230	Economic	Warragul WTP	Bushfire	Need to discuss with Water Authority including confirmation of Treatments and Residual Risk	Medium	103 Community Ed/Engagement, Utility 206 Fire Haz Mngt, Utility 214 Routine Asset Site maintenance, Utility 226 Roadside Veg Mngt, Private 400 Fire Protection Plan, Other 406 EM Plan (site), Utility							Gippsland Water
6231	Economic	Warragul WWTP	Bushfire	Need to discuss with Water Authority including confirmation of Treatments and Residual Risk	Low	103 Community Ed/Engagement, Utility 206 Fire Haz Mngt, Utility 214 Routine Asset Site maintenance, Utility 226 Roadside Veg Mngt, Private 406 EM Plan (site), Utility			Low				Gippsland Water
6263	Economic	Trida Communications Tower	Bushfire	Surrounded by grassed grassland	Medium								CFA Communications, primarily D9
6264	Economic	Moondarra Reservoir Catchment	Bushfire	Need to discuss with Water Authority including confirmation of Treatments and Residual Risk	Very High	103 Community Ed/Engagement, Utility 206 Fire Haz Mngt, Utility 214 Routine Asset Site maintenance, Utility 226 Roadside Veg Mngt, Private 400 Fire Protection Plan, Other 406 EM Plan (site), Utility	Likely	Moderate	High	Yes	416 Fire Access Rd & Trk, DELWP	3	Last burnt 2006. Gippsland Water North catchments for drinking water Fire can affect water quality.
6265	Economic	Flavorite Foods	Bushfire	Surrounded by grassed grassland	Low	409 EM Plan (site), Other	Unlikely	Moderate	Low	NO			
6267	Economic	3GG Communications Towers	Bushfire		Medium	212 Routine Asset Site maintenance, Other 409 EM Plan (site), Other							AM Broadcasting Towers Hut essential for operations
6268	Economic	Princes Hwy	Bushfire	Will be impacted by fire at times which will result in its closure. However, impact in Baw Baw is low with alternate routes available.	High	223 Roadside veg mngt, VicRoads	Unlikely	Minor	Low	NO			Frequency based per kilometres
6269	Economic	HWTS-SMTS No.1 Transmission Line	Bushfire	Need to discuss with SP AusNet	Very High	427 Fire Protection Plan, SP AusNet							Major supplier to Melbourne from power stations SP AusNet
6270	Economic	HWTS-SMTS No.2 Transmission Line	Bushfire	Need to discuss with SP AusNet	Very High	427 Fire Protection Plan, SP AusNet							Major supplier to Melbourne from power stations SP AusNet
6271	Economic	YPS-ROTS No.8 Transmission Line	Bushfire	Need to discuss with SP AusNet	Very High	427 Fire Protection Plan, SP AusNet							Connected to Yallourn PS SP AusNet
6272	Economic	YPS-ROTS No.7 Transmission Line	Bushfire	Need to discuss with SP AusNet	Very High	427 Fire Protection Plan, SP AusNet							Connected to Yallourn PS SP AusNet
6273	Economic	YPS-ROTS No.6 Transmission Line	Bushfire	Need to discuss with SP AusNet	Very High	427 Fire Protection Plan, SP AusNet							Connected to Yallourn PS SP AusNet
6274	Economic	YPS-ROTS No.5 Transmission Line	Bushfire	Need to discuss with SP AusNet	Very High	427 Fire Protection Plan, SP AusNet							Connected to Yallourn PS SP AusNet
6275	Economic	HWPS-ROTS No.2 Transmission Line	Bushfire	Need to discuss with SP AusNet	Very High	427 Fire Protection Plan, SP AusNet							SP AusNet
6276	Economic	HWPS-ROTS No.1 Transmission Line	Bushfire	Need to discuss with SP AusNet	Very High	427 Fire Protection Plan, SP AusNet							SP AusNet
6277	Economic	HWTS-ROTS No.3 Transmission Line	Bushfire	Need to discuss with SP AusNet	Very High	427 Fire Protection Plan, SP AusNet							Major supplier to Melbourne from power stations SP AusNet
6278	Economic	HWTS-CBTS No.4 Transmission Line	Bushfire	Need to discuss with SP AusNet	Very High	427 Fire Protection Plan, SP AusNet							Major supplier to Melbourne from power stations SP AusNet

VFRR-B Asset ID	Asset Type	Description	Risk Category	Likely Scenario based on the McArthur Forest Fire Danger Indices (FFDI) rating of 100	Raw Risk Rating	Existing Treatments	Likelihood	Consequence	Residual Risk	Other	Treatment Recommendations	Treatment Priority	Detail/Comments
6279	Economic	Fonterra, Darnum	Bushfire	Minor bushfire risk due to significant clearance distances. However, disruption to business will be due to loss of access to milk.	Low	212 Routine Asset Site maintenance, Other 405 Emergency water supply, Govt agencies 409 EM Plan (site), Other 404 FP & hyd installation & maintenance, LGA	Unlikely	Moderate	Low	NO			Disruption to business Processing plant
6281	Economic	Thorpdale WTP	Bushfire	Need to discuss with Water Authority including confirmation of Treatments and Residual Risk	Low	103 Community ed/engagement, Utility 206 Fire haz mngt, Utility 214 Routine asset site maintenance, Utility 226 Roadside veg mngt, Private 400 Fire Protection Plan, Other 406 EM Plan (site), Utility 409 EM Plan (site), Other							Gippsland Water
6294	Economic	Potato Seed Stock, Thorpdale	Bushfire	During fire activity vehicle movements need to be monitored in/out of potato seed properties.	Low	Vehicle movements to be considered in response planning.			Low				DELWP Potato Cyst Nematode Biohazard Effects transportation through area.
6295	Economic	Thomson Powerline (Thomson-Aberfeldy-Walhalla)	Bushfire	Is vulnerable to bushfire	Medium								Melbourne Water
6296	Economic	Thomson HPS	Bushfire		Low				Low	NO			Melbourne Water
6297	Economic	Thomson (Drinking Water) Catchment, North Erica	Bushfire		Extreme								Low recovery as catchment still operational after fires however water needs to be treated more at plant. Melbourne Water
6298	Economic	Bells Portal WPS, Mount Baw Baw	Bushfire		Very High								Melbourne Water
6299	Economic	Tarago WTP	Bushfire	Need to discuss with Water Authority including confirmation of Treatments and Residual Risk	Very High	409 EM Plan (site), Other							Melbourne Water
6300	Drinking Water Catchment	Tarago Water Catchment	Bushfire	Need to discuss with Water Authority including confirmation of Treatments and Residual Risk	Very High								Low recovery as catchment still operational after fires however water needs to be treated more at plant. Melbourne Water. DELWP land manger
6301	Infrastructure	Tarago Reservoir WPS, Jindivick	Bushfire	Need to discuss with Water Authority including confirmation of Treatments and Residual Risk	High								Melbourne Water WP185
6302	Infrastructure	Blue Rock WPS, Willow Grove	Bushfire	Need to discuss with Water Authority including confirmation of Treatments and Residual Risk	Low	214 Routine asset site maintenance, Utility 400 Fire Protection Plan, Other 406 EM Plan (site), Utility			Low	NO			Southern Rural Water
6303	Infrastructure	Blue Rock Lake, Willow Grove	Bushfire	Need to discuss with Water Authority including confirmation of Treatments and Residual Risk	Very High	214 Routine asset site maintenance, Utility 400 Fire Protection Plan, Other 406 EM Plan (site), Utility							Southern Rural Water
6400	Environmental	Mount Baw Baw Wet Sub-Alpine Heathland, Mount Baw Baw AR	Bushfire	Yet to be assessed	Very High	217 FMZ, DELWP							Protected under EPBC Act and FFG Act
6404	Environmental	Uralla Nature Reserve, Trafalgar	Bushfire	To be assessed by Baw Baw Shire	Extreme	216 Routine asset site maint. LGA 217 FMZ, DELWP							Endangered Millipede Located behind tip

VFRR-B Asset ID	Asset Type	Description	Risk Category	Likely Scenario based on the McArthur Forest Fire Danger Indices (FFDI) rating of 100	Raw Risk Rating	Existing Treatments	Likelihood	Consequence	Residual Risk	Other	Treatment Recommendations	Treatment Priority	Detail/Comments
6407	Environmental	Robin Hood Reserve,	Bushfire	To be assessed by DELWP	High	405 Emergency water supply, Govt agencies 424 Public Land Mngt Plans, DELWP/PV							DELWP and leased land and Committee of Management Last burnt 2009
6408	Environmental	Rokeby Flora and Fauna Reserve, Rokeby	Bushfire		High	424 Public Land Mngt Plans, DELWP/PV 425 Community activities/planning, Community Groups							Cultural trestle bridge within reserve with European heritage
6409	Environmental	Nangara Reserve, Jindivick	Bushfire		High	424 Public Land Mngt Plans, DELWP/PV							
6410	Environmental	Glen Nayook Reserve, Nayook	Bushfire		Low	424 Public Land Mngt Plans, DELWP/PV 425 Community activities/planning, Community Groups			Lo	NO			
6411	Environmental	Hallora Reserve	Bushfire	Yet to be assessed	Low	424 Public Land Mngt Plans, DELWP/PV			Lo	N			
6603	Cultural	Walhalla Cultural Heritage	Bushfire	Same as Walhalla Township	Very High	Same as Walhalla Township	Possible	Major	High				Whole town in Heritage Overlay
6604	Cultural	Windsor House St Johns Walk, Walhalla	Bushfire	Same as Walhalla Township	Very High	Same as Walhalla Township	Possible	Major	High				Whole town in Heritage Overlay
6605	Cultural	Walhalla Bandstand	Bushfire	Same as for Walhalla Township	Very High	Same as for Walhalla Township	Possible	Major	High				Whole town in Heritage Overlay
6606	Cultural	Rail Bridge, Walhalla	Bushfire				Possible	Major	High				
6607	Cultural	Thomson River Diversion Tunnel, Walhalla	Bushfire	Tunnel not at risk of bushfire					Low	NO			Whole town in Heritage Overlay
6608	Cultural	Brunton's Bridge, Coopers Creek	Bushfire										
6609	Cultural	PS No. 1924, School Rd, Drouin	Bushfire	Same as Drouin Township			Unlikely	Moderate	Low	NO			
6610	Cultural	Warragul Railway Station	Bushfire	Not at risk of bushfire					Low	NO			
6611	Cultural	Warragul Drill Hall, Permewan Lane	Bushfire	Not at risk of bushfire					Low	NO			
6612	Cultural	Timber Bridge, Bridge Rd, Crossover	Bushfire										
6613	Cultural	Noojee Trestle Bridge (wooden)	Bushfire		Very High	202 Burn Program, CFA/DELWP/LGA 212 Routine Asset Site maintenance, Other							DELWP
6616	Cultural	Tramway Bridge, Amor	Bushfire										
6617	Cultural	Walhalla Cemetery	Bushfire		Very High		Possible	Major	High	NO			Whole town in Heritage Overlay
6618	Cultural	Former Walhalla Post Office and Residence	Bushfire	Same as Walhalla Township	Very High	Same as Walhalla Township	Possible	Major	High	NO			Whole town in Heritage Overlay

Attachment A-2 Register of Assets at Risk – Structure Fire

Fire agencies respond to numerous residential and other structure fires each year across all areas of the state. Any such fire has the potential for catastrophic impact on individuals, families and the broader community. There is always the potential for life loss and significant economic and social impact. Fire agencies continually strive, along with their partner agencies (including local councils) to minimise the occurrence and impact of such fires and have in place broad ranging programs and response measures. In addition, legislation is in place that aims to reduce the occurrence and impact of structure fires in the community, including planning and building controls. Program information and advice is available from fire agency websites and offices. **These tables therefore do not quantify the risk of human life loss as it is assumed that the potential for life loss is a constant. Instead, the consequence table considers economic loss and social disruption in the event of a structure fire.**

Asset Type	BCA Class	Description	Likely Scenario	A number of generic treatments exist which are applied across the state or municipality	Likelihood	Consequence	Risk	Potential Further Treatments	Treatment Priority	Detail/Comments
				Existing Treatments						
Residential	1a 1b 10a	Private Dwellings in general - (including house, flat, unit, apartment, caravan, mobile home, private garage, and tenement)	<p>Fire starting within the residence, typically as a result of:</p> <ul style="list-style-type: none"> Naked flames including: <ul style="list-style-type: none"> candles oil burners open fires/solid fuel heaters, stoves Electrical faults including: <ul style="list-style-type: none"> wiring clothes dryers heaters electric blankets Human activity including: <ul style="list-style-type: none"> children playing with matches /lighters smoking unattended cooking clothes drying in front of heaters maintenance activities <p>Fire starting within garage/carport/shed (with potential to spread to dwelling) typically as a result of:</p> <ul style="list-style-type: none"> Human activity including: <ul style="list-style-type: none"> equipment use welding BBQ heater storage and use of flammable liquids smoking Oily rags, spontaneous combustion Vehicle fires 	<ul style="list-style-type: none"> CFA coverage CFA JFAIP Program Community education, state/local Hydrant maint. Reticulated water supply Smoke alarms Water supply 	Almost Certain	Minor	High			
Residential	1a 1b 10a	Private Dwellings old stock, old estates - (including farming residence, house, flat, unit, private garage, and tenement)	<p>As above and;</p> <ul style="list-style-type: none"> old electrical wiring weatherboard cladding poor maintenance works DYI renovations activity 	As above	Almost Certain	Minor	High			
Residential	1a 1b	Special Needs houses e.g. DHHS & other NGO providers:	<p>As for private dwellings plus:</p> <ul style="list-style-type: none"> Clients may have varying perception of danger Client behaviour in response to fire incident may be unexpected. Transient population 	<p>As above plus:</p> <ul style="list-style-type: none"> CFA Brigade usually aware of sites Some sites will have CFA Pre Incident Plans (PIP) Some sites will have smoke alarms monitored by a private company DHHS sites have residential sprinkler systems DHHS sites have Fire Response Plans Some sites have staff during times of occupation 	Possible	Minor	Low	Engage with NGO's to identify properties. PIP for all sites Targeted education/information programs?		

Asset Type	BCA Class	Description	Likely Scenario	A number of generic treatments exist which are applied across the state or municipality	Likelihood	Consequence	Risk	Potential Further Treatments	Treatment Priority	Detail/Comments
				Existing Treatments						
Residential/ SFP	9a	Hospitals- Alarmed Premises: West Gippsland Hosp, Warragul (including Mental Health Facilities) Neerim & District Soldiers Memorial Hosp.	Fire starting within the hospital, potentially as a result of: <ul style="list-style-type: none"> Electrical faults including: <ul style="list-style-type: none"> Wiring Electrical Plant Faulty equipment, including leads Storage and use of gasses Storage and use of chemicals Human activity including: <ul style="list-style-type: none"> Cooking Laundry Maintenance activities Malicious/unapproved activity Complex evacuation due to mobility and medical issues 	<ul style="list-style-type: none"> No smoking inside policy CFA coverage and Pre-Incident Plans Protected premise fire alarm system Sprinkler system EM (Site) Plan & procedures Fire safety inspection (as part of Accreditation) Maintain essential service 24/7 staffing, staff training Water supply – reticulated Test & Tag, electrical equipment 	Possible	Major	High			
	9c	Nursing Homes and Aged Care Facilities- Alarmed Premises: <u>Warragul:</u> Fairview Homes Fairview Rise Gracevale Lodge Coinda Lodge <u>Drouin:</u> Lyrebird Village Amberlea <u>Neerim South:</u> Neerim & District Soldiers Memorial Hosp. <u>Trafalgar:</u> Trafalgar NH, Andrews House Non-Alarmed Premises:	Fire starting within the facility, potentially as a result of: <ul style="list-style-type: none"> Electrical faults including: <ul style="list-style-type: none"> wiring electrical plant faulty equipment, including leads Storage and use of gasses Storage and use of chemicals Human activity including: <ul style="list-style-type: none"> cooking laundry maintenance activities malicious/unapproved activity Complex evacuation due to mobility and medical issues	<ul style="list-style-type: none"> CFA coverage and Pre-Incident Plans 24/7 staffing, staff training EM (Site) Plan & procedures Fire safety inspection (as part of Accreditation) Maintain Essential Service Fire alarm system as required by BCA Sprinkler system as required by BCA Test & Tag, electrical equipment Water supply – reticulated 	Likely	Moderate	High	Night time staffing review		

Asset Type	BCA Class	Description	Likely Scenario	A number of generic treatments exist which are applied across the state or municipality	Likelihood	Consequence	Risk	Potential Further Treatments	Treatment Priority	Detail/Comments
				Existing Treatments						
Residential/ SFP	1a 9c	Aged Care facilities for people capable of independent living. <i>Life style high density living e.g. over 55's retirement villages</i>	Fire starting within the residence, typically as a result of: <ul style="list-style-type: none"> Naked flames including: <ul style="list-style-type: none"> candles oil burners open fires Electrical faults including: <ul style="list-style-type: none"> wiring, including leads overloading of power points clothes dryers heaters electric blankets Human activity including: <ul style="list-style-type: none"> smoking unattended cooking clothes drying in front of heaters maintenance activities Potential complexities due to: <ul style="list-style-type: none"> Building type/construction and proximity to other dwellings Mobility/health issues of residents Access constraints for firefighting purposes 	<ul style="list-style-type: none"> CFA coverage Community education, state/local Hydrant maint. Reticulated water supply Smoke alarms Water supply 	Almost Certain	Minor	High			
Residential/ SFP	Other 10a	Caravan Parks (including moveable dwelling, tents and other facilities) e.g. El -Paso, Drouin Drouin CP Glen Cromie, Drouin West Rawson CP Settlers Rest, Longwarry Nth Warragul Caravan Park Neerim South CP Annexe	Fire starting within the, typically as a result of: <ul style="list-style-type: none"> Naked flames including: <ul style="list-style-type: none"> candles oil burners portable heaters (LPG, kerosene) Electrical faults including: <ul style="list-style-type: none"> wiring/overloaded power boards clothes dryers heaters electric blankets Human activity including: <ul style="list-style-type: none"> children playing with matches /lighters smoking unattended cooking clothes drying in front of heaters maintenance activities Vehicle fires spreading to structures 	<ul style="list-style-type: none"> CFA coverage and Pre-Incident Response Plans CFA Caravan Park Fire Safety 2012 guidelines⁷ EM (Site) Plan & procedures Maintain essential services Site maintenance Smoke alarms for moveable dwellings Staffing, staff training Water supply Test & Tag, park electrical equipment CFA Community Education with Park providers 	Possible	Minor	Low			
Place of Public Assembly	9b	Early Learning & Child Care Centres Specialist Schools	Fire starting within the facility, potentially as a result of: <ul style="list-style-type: none"> Electrical faults including: <ul style="list-style-type: none"> wiring electrical plant faulty equipment, including leads Human activity including: <ul style="list-style-type: none"> cooking equipment use maintenance activities Malicious/unapproved activity 	<ul style="list-style-type: none"> CFA coverage and Pre-Incident Response Plans EM (Site) Plan & procedures Maintain essential service Staff training, higher staffing levels Water supply Test & Tag, site electrical equipment 	Possible	Minor	Low			

⁷ Caravan Park Fire Safety

Asset Type	BCA Class	Description	Likely Scenario	A number of generic treatments exist which are applied across the state or municipality	Likelihood	Consequence	Risk	Potential Further Treatments	Treatment Priority	Detail/Comments
				Existing Treatments						
			Potential for added complexity due to unpredictable student behaviour							
Place of Public Assembly	9b	Schools &TAFE	Fire starting within the facility, potentially as a result of: <ul style="list-style-type: none"> Electrical faults including: <ul style="list-style-type: none"> wiring electrical plant faulty equipment, including leads Storage and use of gasses Storage and use of chemicals/flammable liquids Human activity including: <ul style="list-style-type: none"> cooking laundry equipment use welding spray painting maintenance activities oily rags, spontaneous combustion Malicious/unapproved activity 	<ul style="list-style-type: none"> CFA coverage and Pre-Incident Response Plans EM (Site) Plan & procedures Maintain essential service Staff training Water supply Test & Tag, site electrical equipment DEECD EM requirements 	Possible	Major	High			
Place of Public Assembly/SFP	3	School Camps and accredited DEECD Camps Brighten Grammar	Fire starting within buildings, potentially as a result of: <ul style="list-style-type: none"> Electrical faults including: <ul style="list-style-type: none"> wiring electrical plant faulty equipment, including leads Human activity including: <ul style="list-style-type: none"> cooking laundry equipment use maintenance activities BBQ use adjacent to flammable structures Malicious/unapproved activity 	<ul style="list-style-type: none"> CFA coverage and Pre-Incident Response Plans EM (Site) Plan, procedures, evac exercises Maintain essential service Staff training Water supply Test & Tag, site electrical equipment DEECD EM requirements 	Possible	Minor	Low	Establish which of the following camps are DEECD accredited: Labertouche Forrest Edge, Neerim East Rubicon, Nayook Summit, Trafalgar East Rawson Retreat, Rawson Tidsdale, Walhalla Allambee Camp, Allambee Reserve Cathrines Creek, Allambee Reserve		
Place of Public	3	Church/Scout Camps and non-accredited camps: Caringal Scout Camp, Rawson	As above	<ul style="list-style-type: none"> CFA coverage and Pre-Incident Response Plans Water supply (further investigation required) 	Possible	Minor	Low	Need to engage, site inspections.		
Place of Public Assembly / SFP	3	Hotels, Motels, Resorts, boarding schools, bunk houses with accommodation e.g. Commercial, Railway, Club Hotels, Warragul; Royal, Drouin Family Hotels, Drouin; View Hotel Commercial Hotel, Yarragon Criterion Hotel, Trafalgar Mountain River Lodge, Rawson Best Western Motels at Drouin & Warragul Edinburgh, Warragul, Freeway Motels, Warragul; Yarragon Motel Erica Hotel Out Post, Noojee	Fire starting within the facility, potentially as a result of: <ul style="list-style-type: none"> Electrical faults including: <ul style="list-style-type: none"> wiring clothes dryers heaters electric blankets electrical plant faulty equipment, including leads Human activity including: <ul style="list-style-type: none"> cooking laundry maintenance activities malicious/unapproved activity 	<ul style="list-style-type: none"> CFA coverage and Pre-Incident Response Plans 24/7 staffing, staff training EM (Site) Plan & procedures Fire alarm system as required by BCA Industry guidelines Maintain essential service Sprinkler system as required by BCA Test & Tag, site electrical equipment Water supply 	Possible	Minor	Low			
Place of	3	Mount Baw Baw Resort <i>(on site private electricity generation)</i>	As above: Further assessment required	As above: <ul style="list-style-type: none"> Hyd posn in resort with hoses reach every building. 	Possible	Minor	Low	Staff training – designated response team - structural	DELWP Land Manager	

Asset Type	BCA Class	Description	Likely Scenario	A number of generic treatments exist which are applied across the state or municipality	Likelihood	Consequence	Risk	Potential Further Treatments	Treatment Priority	Detail/Comments
				Existing Treatments						
Place of Public Assembly	9b	Entertainment sites Alarmed premises* West Gippsland Arts Centre*, Warragul Warragul Cinema Complex* Lardner Park (part) Non-Alarmed premises Butter Factory Theatre, Drouin Race Tracks Lardner Park (part) Non-Licensed Venues: e.g. halls, churches, social & sporting clubs, fishing clubs, library. Licensed Venues: e.g. hotels & night clubs, social & sporting clubs.	Fire starting within the facility, potentially as a result of: <ul style="list-style-type: none"> Electrical faults including: <ul style="list-style-type: none"> wiring clothes dryers heaters electrical plant faulty equipment, including leads Human activity including: <ul style="list-style-type: none"> cooking laundry use of decorations/props maintenance activities malicious/unapproved activity 	<ul style="list-style-type: none"> 3 storey sprinklers BCA CFA coverage Maintain essential service Staff training Water supply Fire alarm system as required by BCA Industry guidelines Sprinkler system as required by BCA CFA Pre-Incident Response Plans 	Possible	Minor	Low			
	Place of Public Assembly	5	Commercial (retail, offices and commercial business)– Alarmed premises: GHCG Offices Warragul Shire Offices, Warragul, Drouin & Trafalgar Coles, Warragul & Drouin Safeway, Warragul & Drouin Aldi Target complex, Warragul Drouin Central shopping complex DELWP at Ellinbank Commercial (retail, offices and commercial business) Includes: CBDs, Warragul & Drouin Shopping strips, Trafalgar, Yarragon Veterinary Supermarkets Hardware stores Medical Centres Giles Arcade General stores	Fire starting within the facility, potentially as a result of: <ul style="list-style-type: none"> Electrical faults including: <ul style="list-style-type: none"> wiring electrical plant faulty equipment, including leads Storage and use of gasses Storage and use of chemicals/flammable liquids Human activity including: <ul style="list-style-type: none"> cooking laundry equipment use maintenance activities Fire starting adjacent to, and spreading to buildings (waste bins) Malicious/unapproved activity Potential for added complexity where joint commercial/residential use exists	<ul style="list-style-type: none"> CFA coverage EM (Site) Plan & procedures Fire alarm system as required by BCA Maintain essential service Staff training Test & Tag, site electrical equipment (some) Water supply CFA Pre-Incident Response Plans 	Possible	Minor	Low		
5										
8										
5										
8										
9a										
5										
6a	6a	General industrial buildings/businesses i.e.: <i>Motor engineers</i> <i>Vehicle body shops</i> <i>Engineering firms</i> <i>Prefabricated home construction</i> <i>Electricians</i> <i>Furniture manufacturers</i>	Fire starting within the facility, potentially as a result of: <ul style="list-style-type: none"> Electrical faults including: <ul style="list-style-type: none"> wiring electrical plant faulty equipment, including leads Storage and use of gasses Storage and use of chemicals/flammable liquids Human activity including: <ul style="list-style-type: none"> cooking laundry equipment use maintenance activities Fire starting adjacent to, and spreading to buildings (waste bins) 	<ul style="list-style-type: none"> CFA coverage EM (Site) Plan & procedures Fire alarm system as required by BCA Maintain essential service Staff training Test & Tag, site electrical equipment (some) Water supply 	Likely	Minor	Medium			

Asset Type	BCA Class	Description	Likely Scenario	A number of generic treatments exist which are applied across the state or municipality	Likelihood	Consequence	Risk	Potential Further Treatments	Treatment Priority	Detail/Comments
				Existing Treatments						
			<ul style="list-style-type: none"> Malicious/unapproved activity 							
Commercial/ Industrial		Agricultural Production: Also includes: Favorite Tomatoes Cool Stores Winery's Flower growers	As above	As above	Likely	Minor	Medium			
Commercial, /Industrial	8	Timber production: Drouin West Timber Green Mill, Shady Creek George Morgan Mill, Erica Browns Mill, Noojee	Fire starting within the facility, potentially as a result of: <ul style="list-style-type: none"> Electrical faults including: <ul style="list-style-type: none"> wiring electrical plant faulty equipment, including leads Storage and use of gasses Storage and use of chemicals/flammable liquids Human activity including: <ul style="list-style-type: none"> cooking laundry equipment use maintenance activities Fire starting adjacent to, and spreading to buildings (waste bins) <ul style="list-style-type: none"> Malicious/unapproved activity 	<ul style="list-style-type: none"> CFA coverage EM (Site) Plan & procedures Fire alarm system as required by BCA Maintain essential service Staff training Test & Tag, site electrical Equip. (some) Water supply DELWP/CFA permits for waste pit burns 	Possible	Minor	Low			
Industry	8	Livestock Production: including barns, stables, haystacks	Fire starting within the facility, potentially as a result of: <ul style="list-style-type: none"> Electrical faults including: <ul style="list-style-type: none"> wiring electrical plant faulty equipment, including leads Storage and use of gasses Storage and use of chemicals/flammable liquids Human activity including: <ul style="list-style-type: none"> cooking laundry equipment use maintenance activities Fire starting adjacent to, and spreading to buildings (waste bins) <ul style="list-style-type: none"> Malicious/unapproved activity 	<ul style="list-style-type: none"> CFA coverage Fire prevention inspections 	Possible	Minor	Low			
Industry	8	Dairy Product Manufacturing general: Also includes: Jindi Cheese Tarago Cheese	Fire starting within the facility, potentially as a result of: <ul style="list-style-type: none"> Electrical faults including: <ul style="list-style-type: none"> wiring electrical plant faulty equipment, including leads Storage and use of gasses Storage and use of chemicals/flammable liquids Human activity including: <ul style="list-style-type: none"> cooking laundry equipment use maintenance activities 	<ul style="list-style-type: none"> CFA coverage BCA specific requirements EM (Site) Plan & procedures Fire alarm system as required by BCA Maintain essential service No smoking policy Staff training Test & Tag, site electrical equipment (some) Water supply 	Possible	Minor	Low			

Asset Type	BCA Class	Description	Likely Scenario	A number of generic treatments exist which are applied across the state or municipality	Likelihood	Consequence	Risk	Potential Further Treatments	Treatment Priority	Detail/Comments
				Existing Treatments						
			<ul style="list-style-type: none"> • Fire starting adjacent to, and spreading to buildings (waste bins) • Malicious/unapproved activity 							
Industry	8	Fonterra – Alarmed premises, Darnum Dust Explosion (milk drying plant)	As above plus: <ul style="list-style-type: none"> • Dust explosion (milk drying plant) 	As above plus: <ul style="list-style-type: none"> • Fire alarm and sprinkler systems • CFA Pre-Incident Response Plans 	Possible	Minor	Low			
Industry	8	Longwarry Food Park Dust Explosion (milk drying plant)	As above plus: <ul style="list-style-type: none"> • Dust explosion (milk drying plant) 	As above plus: <ul style="list-style-type: none"> • Fire alarm and sprinkler systems 	Possible	Minor	Low			
Industry	8	Manufacturing Property: Also includes: Drouin Industrial Park Warragul Industrial Area VIP Packaging Dry Pac Pure Harvest, Drouin	Fire starting within the building, potentially as a result of: <ul style="list-style-type: none"> • Electrical faults including: <ul style="list-style-type: none"> ○ wiring ○ electrical plant ○ faulty equipment, including leads • Storage and use of gasses • Storage and use of chemicals/flammable liquids • Human activity including: <ul style="list-style-type: none"> ○ equipment use ○ welding ○ manufacturing operations ○ spray painting ○ oily rags, spontaneous combustion ○ materials handling ○ maintenance activities • Malicious/unapproved activity 	<ul style="list-style-type: none"> • CFA coverage • EM (Site) Plan & procedures • Fire alarm system as required by BCA • Maintain essential service • Staff training • Test & Tag, site electrical equipment (some) • Water supply 	Likely	Minor	Medium			

Attachment A-3 Register of Assets at Risk – Fires Involving Chemicals

Asset Type	Fires involving chemicals listed in this register relate to chemicals that make fire behaviour more complex, severe or unpredictable. NB: They do not relate to gases or fuels		A number of generic treatments exist which are applied across the state or municipality, and as such are not listed against each asset listed below but are listed in Part 5 of the MFMP	Likelihood	Consequence	Risk	Treatment Recommendations	Detail/Comments
	Description	Likely Scenario	Existing Treatments					
Industrial/ Commercial	Fires involving stored chemicals, includes large agricultural supply businesses	Structure fire start, chemical involvement adding additional complexity to incident management.	<ul style="list-style-type: none"> CFA coverage EM (Site) Plans Code of Practice for the Storage and Handling of Dangerous Goods No.27 National Code of Practice for the Placarding of Chemical Stores Agricultural Chemical Users Permit – DELWP Chemical Safety Self-Assessment Tool – Worksafe 	Possible	Moderate	Medium		<p><i>Indicative assessment only</i></p> <p>Chemicals (agricultural) include fuels, solvents, pesticides, herbicides, fungicides, fertilisers and veterinary drugs e.g.</p> <ul style="list-style-type: none"> Glyphosate Aluminium/Zinc phosphide – fumigant Organophosphates Pyrethroids Methyl bromide Sodium Fluoroacetate – ‘1080’ baits Strychnine Paraquat, Diquat Cresol Alkaline and acid-cleaning agents Formalin Nutritional supplements – selenium and copper Livestock vaccines.
Industrial/ Commercial	Fires involving sites with large use of refrigerants	Structure fire start, refrigerant involvement adding additional complexity to incident management.	CFA coverage	Possible	Moderate	Medium		<p><i>Indicative assessment only</i></p>
Industrial/ Commercial	Fires involving transportation of chemicals	Vehicle accident/fire, chemical involvement adding additional complexity to incident management.	<ul style="list-style-type: none"> CFA coverage Australian Code for the Transport of Dangerous Goods by Road and Rail Composite Warning Placards Emergency Procedure Guide AS 1678 VicRoads Chain of Responsibility inspections/searches 	Possible	Moderate	Medium	Potential for longer term environmental impact	<p><i>Indicative assessment only</i></p>
Industrial	Water Treatment Plants www.ofite.com/msds	Structure fire start involving storage of Sodium Hypochlorite (non-flammable) and oxidising agents.	<ul style="list-style-type: none"> CFA coverage Composite Warning Placards EM (Site) Plans Code of Practice for the Storage and Handling of Dangerous Goods No.27 National Code of Practice for the Placarding of Chemical Stores 	Possible	Minor			
Commercial	Caltex Depot Dry Pac VIP Packaging	Fire involving flammable liquid. Improper storage of chemicals.	<ul style="list-style-type: none"> CFA coverage Composite Warning Placards Emergency Procedure Guide AS 1678 Code of Practice for the Storage and Handling of Dangerous Goods No.27 National Code of Practice for the Placarding of Chemical Stores Chemical Safety Self-Assessment Tool – Worksafe 	Possible	Minor			

Attachment B-1 – Hazard Trees Identification (Electricity Safety Act 1998)

Hazard trees – identification and notification procedures

Section 86B of the *Electricity Safety Act 1998* (ES Act) provides the obligations for municipal councils;

Municipal fire prevention plans must specify procedures for the identification of trees that are hazardous to electric lines

- a) procedures and criteria for the identification of trees that are likely to fall onto, or come into contact with, an electric line (hazard trees); and
- b) procedures for the notification of responsible persons of trees that are hazard trees in relation to electric lines for which they are responsible.

The procedures outlined in this section of the MFMP seek to address the requirement detailed above. Each responsible person should have its own internal procedure regarding the steps that will be taken when it receives notification of a potentially hazardous tree.

What is a hazard tree?

According to the ES Act, a hazard tree is a tree which 'is likely to fall onto, or come into contact with, an electric line'.

The Electricity Safety (Electric Line Clearance) Regulations 2010 further provide that a responsible person may cut or remove such a tree 'provided that the tree has been assessed by a suitably qualified arborist, and that assessment confirms the likelihood of contact with an electric line having regard to foreseeable local conditions.

Due to legal requirements which require a clearance space be maintained around an electric line, hazard trees are usually located outside the regulated clearance space. Despite being outside the clearance space, the tree may still have the potential to contact the line due to its size or because of a structural fault or weakness which renders part, or all of the tree likely to contact or fall onto the line.

Who is responsible for a hazard tree?

Under the ES Act, the person responsible for maintaining vegetation and clearance space around power lines is referred to as the 'responsible person'. This includes responsibility for keeping the whole or any part of a tree clear of the line.

Under the ES Act, responsibility is allocated between distribution businesses, other owners of electricity infrastructure, land owners and occupiers for clearance of private power lines, public land managers where they are identified as the responsible person such as municipal councils, DELWP and Regional Roads Victoria.

Responsible Persons within Baw Baw Shire Council

There are a number of organisations that have responsibility for line clearance in Baw Baw Shire including:

- AusNet Services
- Regional Roads Victoria
- Baw Baw Shire Council

There is only one electricity distribution business in Baw Baw Shire Council.

There are two Declared Areas (as per Section 81 of the ES Act) within Baw Baw Shire in the towns of Warragul and Drouin, where the responsibility lies with Council to identify, assess and remedy any hazardous tree that falls within the Declared Area.



Figure 1 - latitude -38.17715793, longitude 145.929386



Figure 2 - latitude -38.17660492, longitude 145.929613

Other relevant information

Responsible persons, other than private persons, must have an electric line clearance management plan in place for areas for which they have responsibility. Refer *Electricity Safety (Electric Line Clearance Regulations 2010)*.

Procedures and criteria for identifying hazard trees

In the course of everyday duties, potentially hazardous trees may come to the attention of Council staff or volunteer members of the entities with representation on the MFMPC, staff of the distribution business(es) or other persons, including members of the public.

There are a range of factors which may indicate that a tree is a hazard tree. That is, a tree which is likely to fall onto, or come into contact with, an electric line. Some of these factors will be obvious when looking at the tree but many may only be apparent when the tree is assessed by a person with specific expertise and training, such as an arborist.

The following criteria may be used to assist in identifying a hazard tree:

- The size of the tree suggests that it is likely to come into contact with the electric line, for example because it appears to be encroaching or growing into the line clearance space.
- There is an excessive lean on the tree, or branches hanging off the tree and the tree is in proximity to an electric (power) line.
- The size or appearance of the tree suggests it could come into contact with the line including under foreseeable local conditions.

If a potentially hazardous tree is identified, the notification procedure outlined below should be followed. Where a responsible person becomes aware of a potentially hazardous tree for which they have responsibility, they must follow their own applicable internal procedure and the notification procedure described below does not apply.

Procedures and criteria for notifying hazard trees

To ensure that information regarding potentially hazardous trees is captured in an efficient manner and, as appropriate, referred to the responsible person for action, the following procedure for the notification of hazardous trees should be followed:

- The organisation with responsibility for the highest percentage of lines within the municipality (the primary responsible person) is SP AusNet and therefore the person to whom potentially hazardous trees should be reported if the hazardous tree is identified outside of the Declared Area.
- The organisation with the responsibility for power lines that fall within the Declared Area is Baw Baw Shire Council.
- Where any person becomes aware of or receives a report of a potentially hazardous tree within the municipality, this should be referred to AusNet Services in the first instance and Baw Baw Shire Council if the potential hazard tree is within the Declared Area townships of Warragul or Drouin. Where the Committee becomes aware of, or receives a report of, a potentially hazardous tree within the municipality, this must be referred to AusNet Services or Baw Baw Shire Council.
- Reports of potentially hazardous trees must be provided to either AusNet Services or Baw Baw Shire Council for action as soon as practicable. Reports must include, as far as practicable;

- The name and contact details and any relevant qualifications where known of the person making the report;
- As much detail as possible about the location of the tree (including, where known, GPS coordinates, details of numerical/name plate on nearest pole, name of nearest road or crossroads, closest landmark, whether tree is on private land or road reserve etc.);
- A description of the tree (including, if known, the genus and species of tree);
- The primary reasons given for the tree being identified as potentially hazardous (e.g. tree is in proximity to an electric line AND there is evidence of structural weakness and/or excessive lean and/or appears to be encroaching into line clearance space etc.); and
- An indication of whether or not urgent action is required.
- AusNet Services or Baw Baw Shire Council must take all necessary steps to advise the person responsible for the tree that it may be hazardous where they are not the responsible person.

Primary Responsible Person Representative (PRPR)

For the purposes of this part of the Plan, the primary responsible person for potential hazardous trees within the Declared Area is Baw Baw Shire Council. Contact details for the Baw Baw Shire Council, are as follows:

Agency name	Baw Baw Shire Council
Position title of contact person	Municipal Fire Prevention Officer
Telephone Number	03 5624 2411
Email address	mfpo@bawbawshire.vic.gov.au
After Hours Number	03 5624 2411

For the purposes of this part of the Plan, the primary responsible person for areas outside of the Declared Area is SP AusNet. Contact details for AusNet Services are as follows:

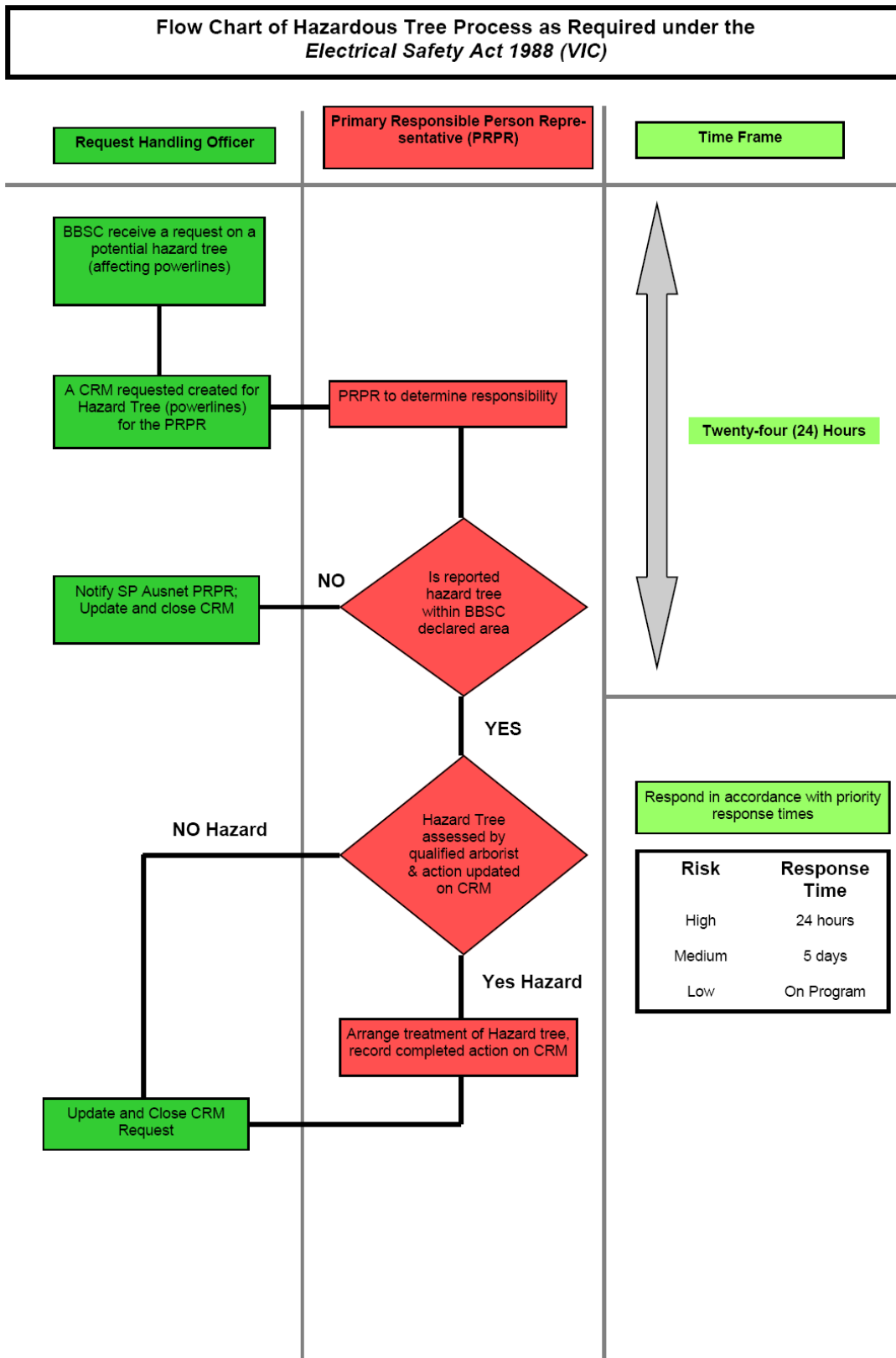
Agency name	AusNet Services (contracting Select Solutions)
Position title of contact person	Peter Scotto
Telephone Number	03 9237 4419 or 0408 403 749
Email address	peter.scotto@select-solutions.com.au
After Hours Number	03 9237 4419

Procedures for Notification of Responsible Persons

Where a potentially hazardous tree has been reported to Baw Baw Shire Council or AusNet Services or another responsible person, the procedure outlined below should be followed.

AusNet Services and all responsible persons should put in place, mutually agreed arrangements for the manner in which reports of potentially hazardous trees are passed on to responsible persons.

Baw Baw Shire Process



Reporting Timelines

AusNet Services should provide reports to the relevant responsible person as soon as practicable in circumstances where:

- the potentially hazardous tree is located within a high bushfire risk area (as per Section 80 of the ES Act) and the potentially hazardous tree is reported during the fire danger period declared under the CFA Act; or
- the report indicates that there is an imminent danger that the tree will contact or fall onto lines as a result of minor environmental changes.

The potentially hazardous tree must be referred to the relevant responsible person for action as soon as possible, and by close of the next business day.

Each responsible person (other than the primary responsible person) must provide SP AusNet with contact details of the person (position title) who reports should be provided. It is the responsibility of each responsible person to ensure that SP AusNet is provided with up-to-date contact details.

Register

It is recommended that SP AusNet maintain a register in which all notifications are recorded together with the date of receipt of the notification and the date the notification was reported to the responsible person.

It is recommended that responsible persons also maintain a register of notifications received of hazardous trees for which they are the responsible person.

Primary Responsible Person Consultation

The Committee notes that AusNet Services as the Primary Responsible Person was consulted in relation to the development of these procedures.

Procedure for Baw Baw Shire Council and hazard trees in the Declared Area

Report comes into council (either through external agency/organisation, member of the public or internal staff/contractors) of hazard tree likely to fall or come into contact with powerlines.

Hazard tree is logged into CRM and is assigned to the PRPR. PRPR determines who is responsible for the hazard tree. If the Hazard tree is in the Declared Area of either Warragul or Drouin the hazard tree is assessed and designated into one of the following categories:

- Hazard Tree (assessed)
- Not a Hazard Tree (assessed)

If the tree is not a hazard tree, then it is closed off in CRM.

If the tree is a hazard tree, then the PRPR is required to action a process to have the hazard tree treated i.e., trimmed or removed) and update CRM as appropriate.

Once the identified hazard tree has either been treated, deemed safe or completely removed, the assessor is again required to update CRM as such. Once the 'end point' has been reached for each individual tree, sign off is required within CRM to ensure each individual tree is closed off.

Attachment B-2 – Community Information Guides – Bushfire

Location	CIG Name	CIG Approved
Noojee	Noojee	Sep 2017
Tanjil Bren	Tanjil Bren	Sep 2017
Erica and Rawson	Erica Rawson	Sep 2017

Community Information Guides (CIG)- Bushfire (formerly known as Township Protection Plans) are a key source of information for the community and an important tool to emphasise the shared responsibility between the community, fire services and local government.

Guides have been developed for a number of communities statewide that are deemed to be at risk of bushfire or grassfire.

Your CIG provides important direction and information for communities to assist with planning before, during and after a fire. CFA advises that everyone should have a written Bushfire Survival Plan. For more information and to develop your plan, [attend a community meeting](#) in your area or online.

Attachment B-3 – Neighbourhood Safer Places/Place of Last Resort

Neighbourhood Safer Places/ Places of Last Resort (NSPS/PLR) are identified buildings or spaces within the community that may afford some protection from radiant heat, the biggest killer during bushfire. They are a place of last resort in emergencies only, to be used when individual Bushfire Survival Plans fail.

NSPs/PLR do not offer guaranteed ultimate safety. Relocating to an NSPs/PLR also carries a level of risk including death. Please be aware of the following risks associated with NSPs/PLR:

- Going to a NSPs/PLR is an option of last resort when other plans have failed.
- NSPs/PLR is not an alternative to planning to either leaving early or staying and actively defend your property.
- They are not inherently "safe" places during a bushfire and will not guarantee your safety.
- Many houses will provide more effective protection than NSPs/PLR.
- Travelling to a NSPs/PLR during a fire is dangerous. Visibility may be poor due to heavy smoke. The roads may be blocked due to traffic congestion, fallen trees, collisions or emergency vehicles.
- There is no guarantee that you will not be injured or killed by fire or radiant heat when travelling to or sheltering at a NSPs/PLR.
- While emergency services will make every effort to protect people sheltering at NSPs/PLR, there is no guarantee that emergency services will be present.
- There will generally be limited parking. Large numbers of vehicles may further compromise what little protection the area affords.
- No amenities (e.g. food, drinks, and toilets) will be provided.
- It may not provide shelter from smoke and embers.

NSPS/PLR have been assessed by CFA against NSPs/PLR report assessment guidelines. It then becomes the responsibility of Council to endorse and maintain the NSPs/PLR.

NSPs/PLR's are reviewed annually to ensure they still meet the municipal safer places criteria.

Please Note: There are no NSPS/PLR in Baw Baw Shire.

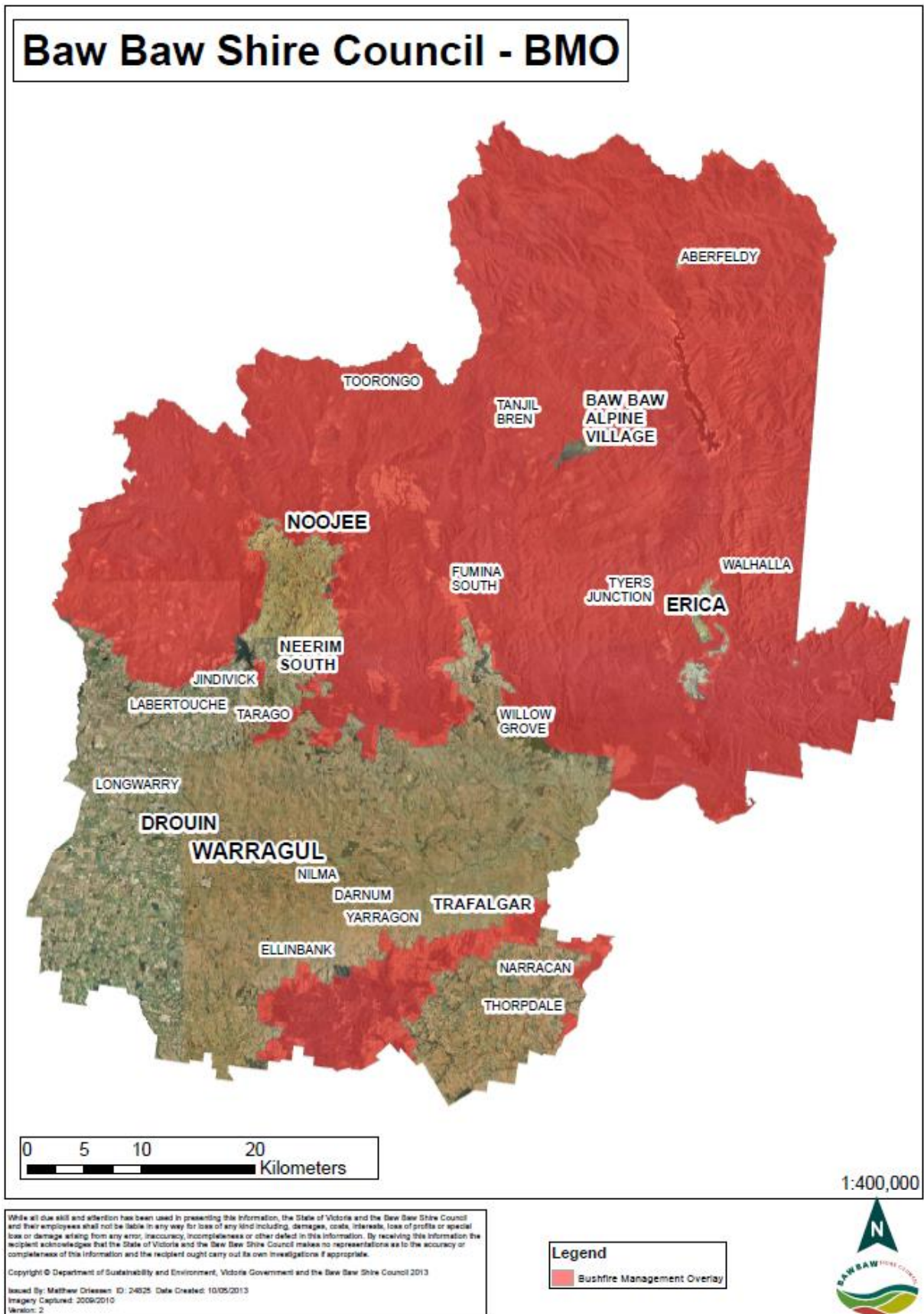
Attachment B-4 – Community Fire Refuges

There are no Community Fire Refuges in Baw Baw Shire.

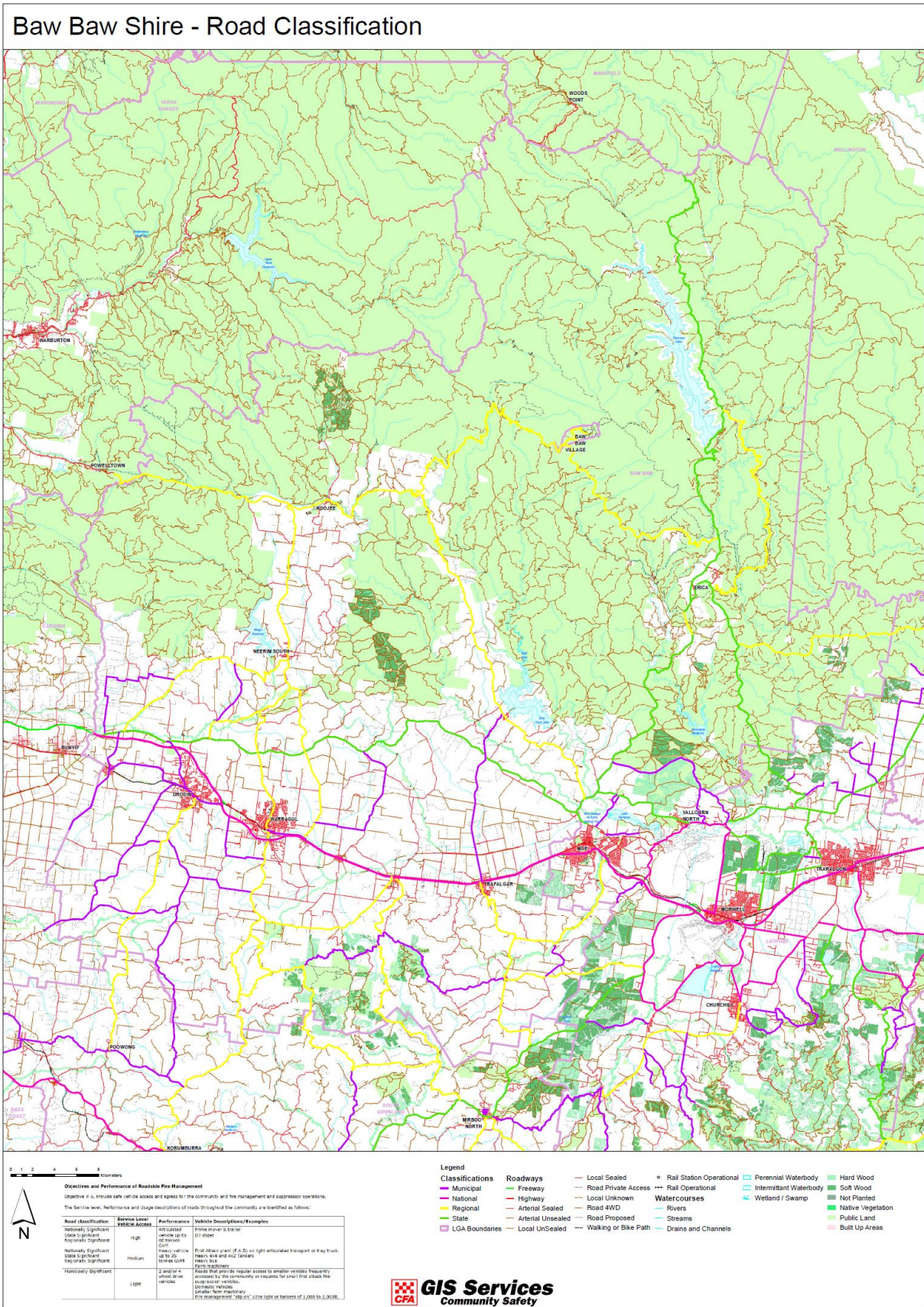
Attachment C – Maps

Map No.	Map Title	Map Owner and Link
1	Baw Baw Shire Bushfire Management Overlay	BBSC
2	Baw Baw Shire Road Classification	CFA VFRR-B
3	Human Settlement (Assets at Risk - Bushfire)	CFA VFRR-B
4	Economic (Assets at Risk - Bushfire)	CFA VFRR-B
5	Environmental (Assets at Risk - Bushfire)	CFA VFRR-B
6	Cultural/Heritage (Assets at Risk - Bushfire)	CFA VFRR-B
7	Baw Baw Shire Fire Infrastructure	DELWP

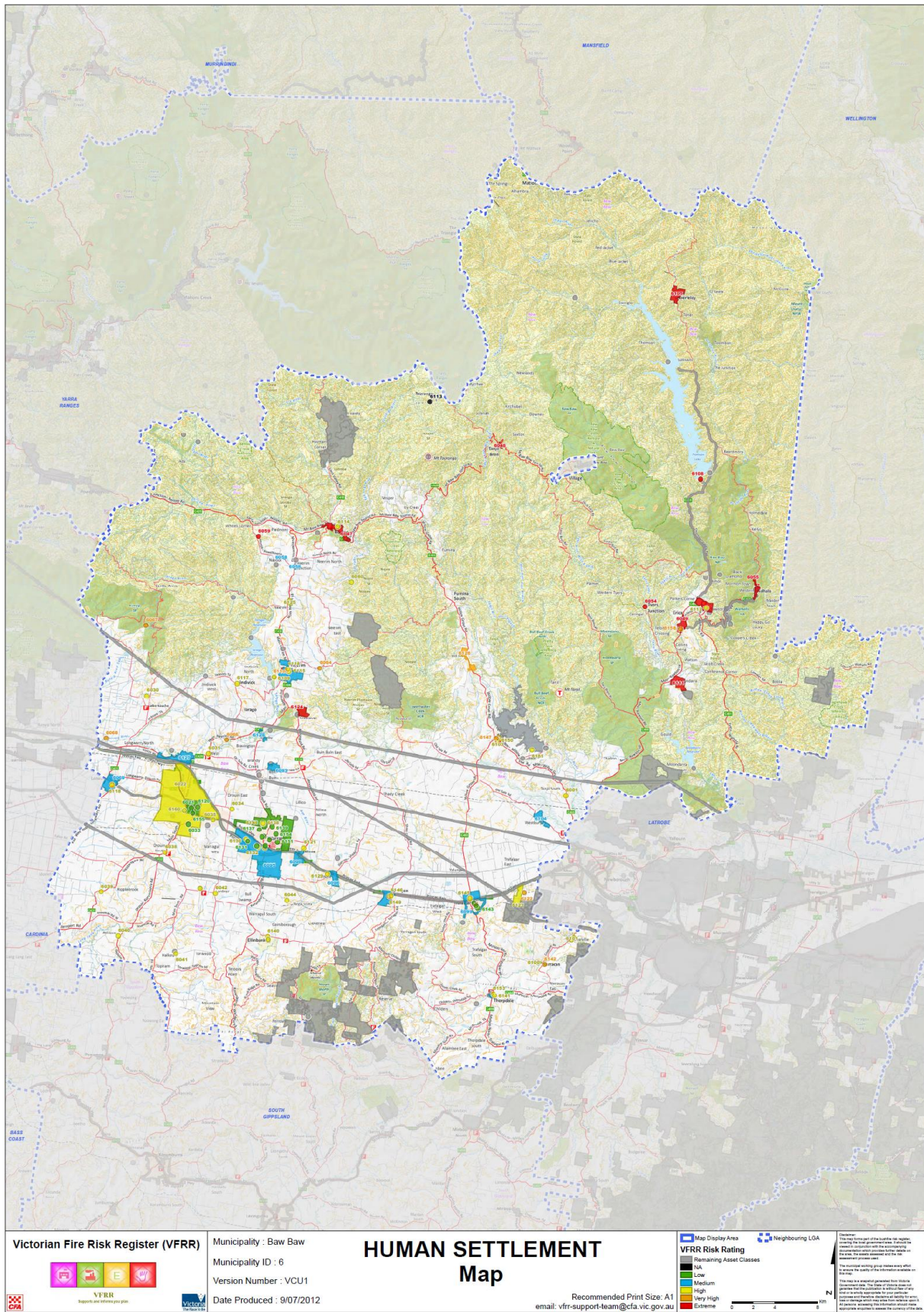
Map 1: Baw Baw Shire Bushfire Management Overlay



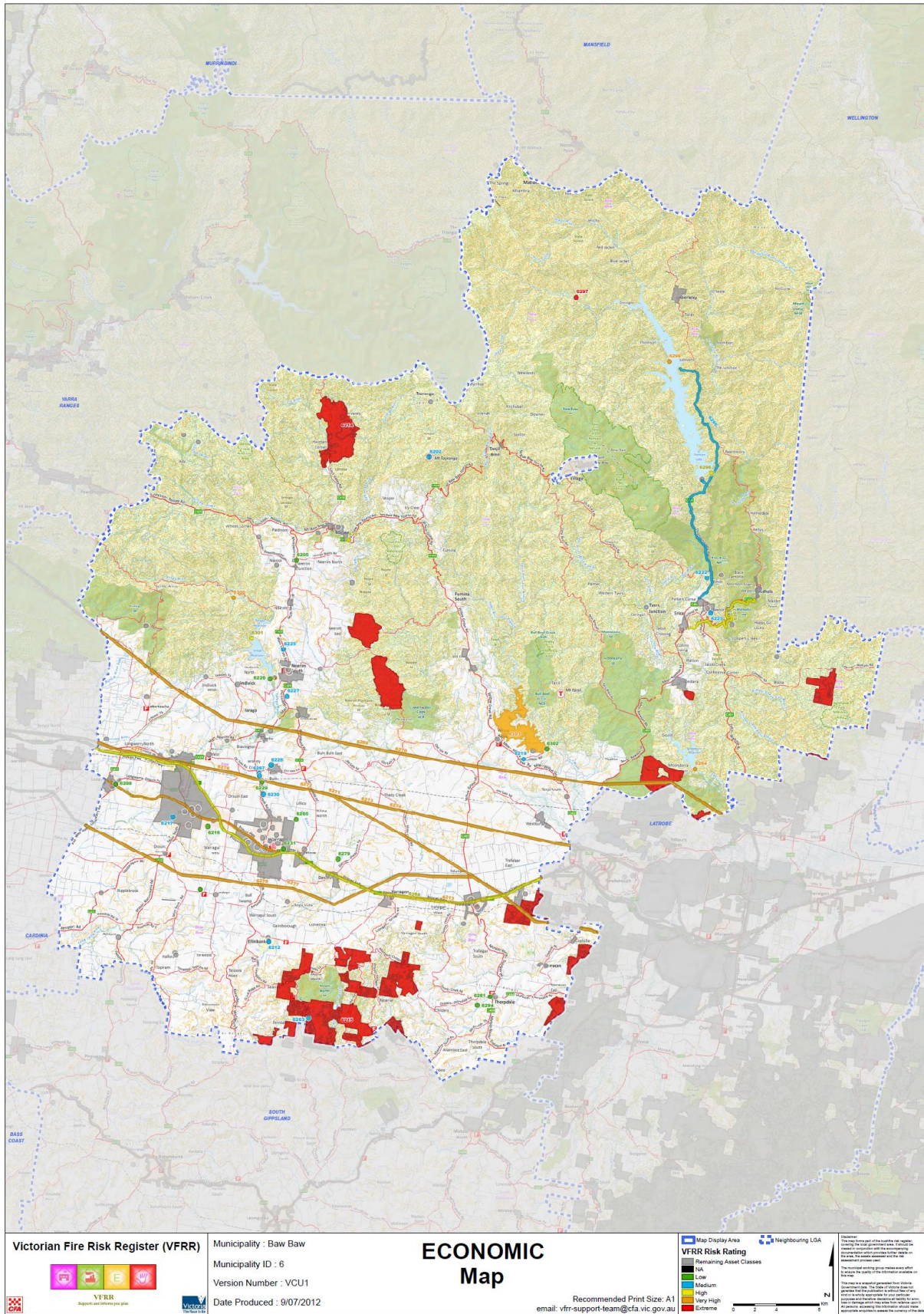
Map 2: Baw Baw Shire: Road Classification



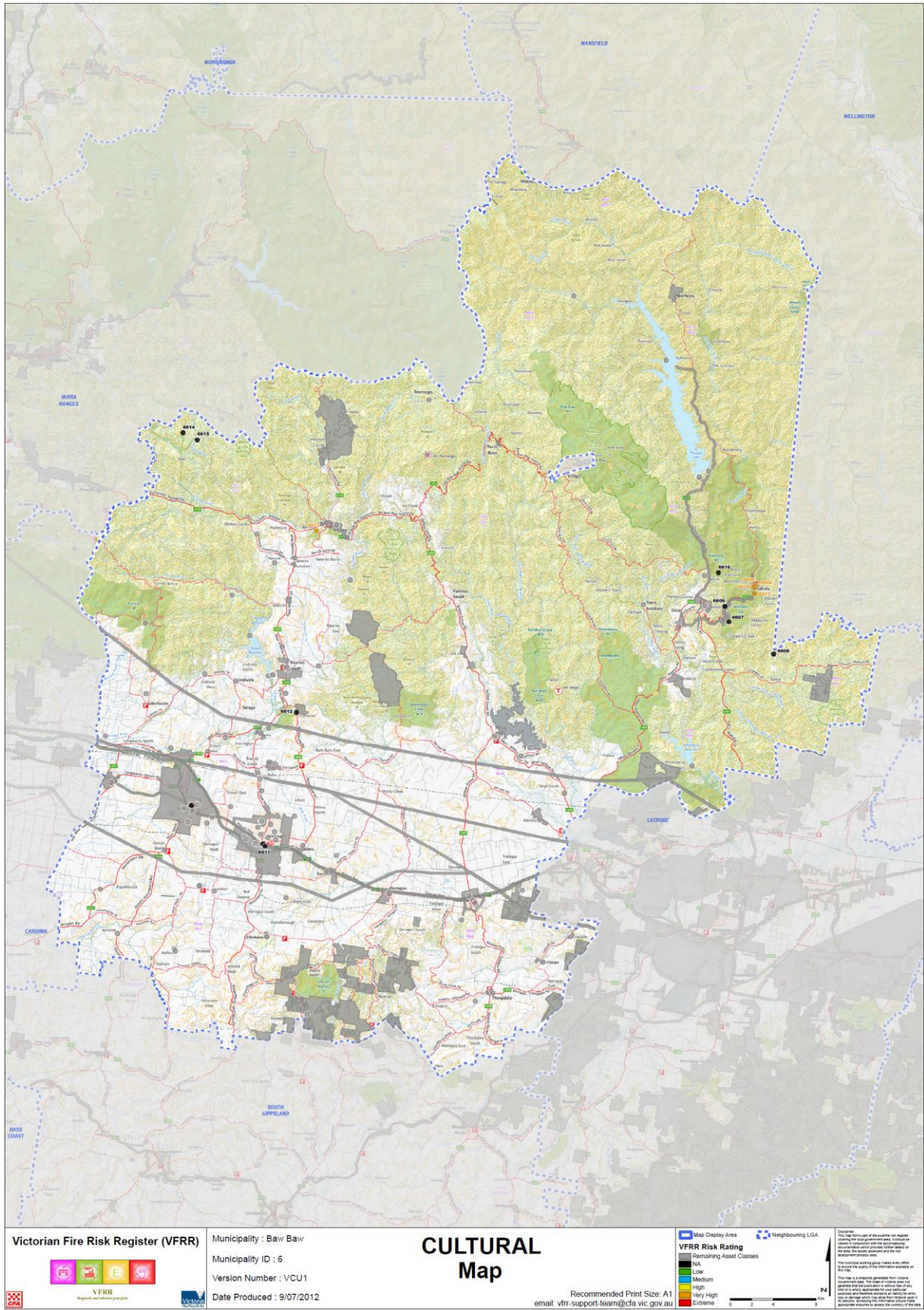
Map 3: Human Settlement (Assets at Risk - Bushfire)



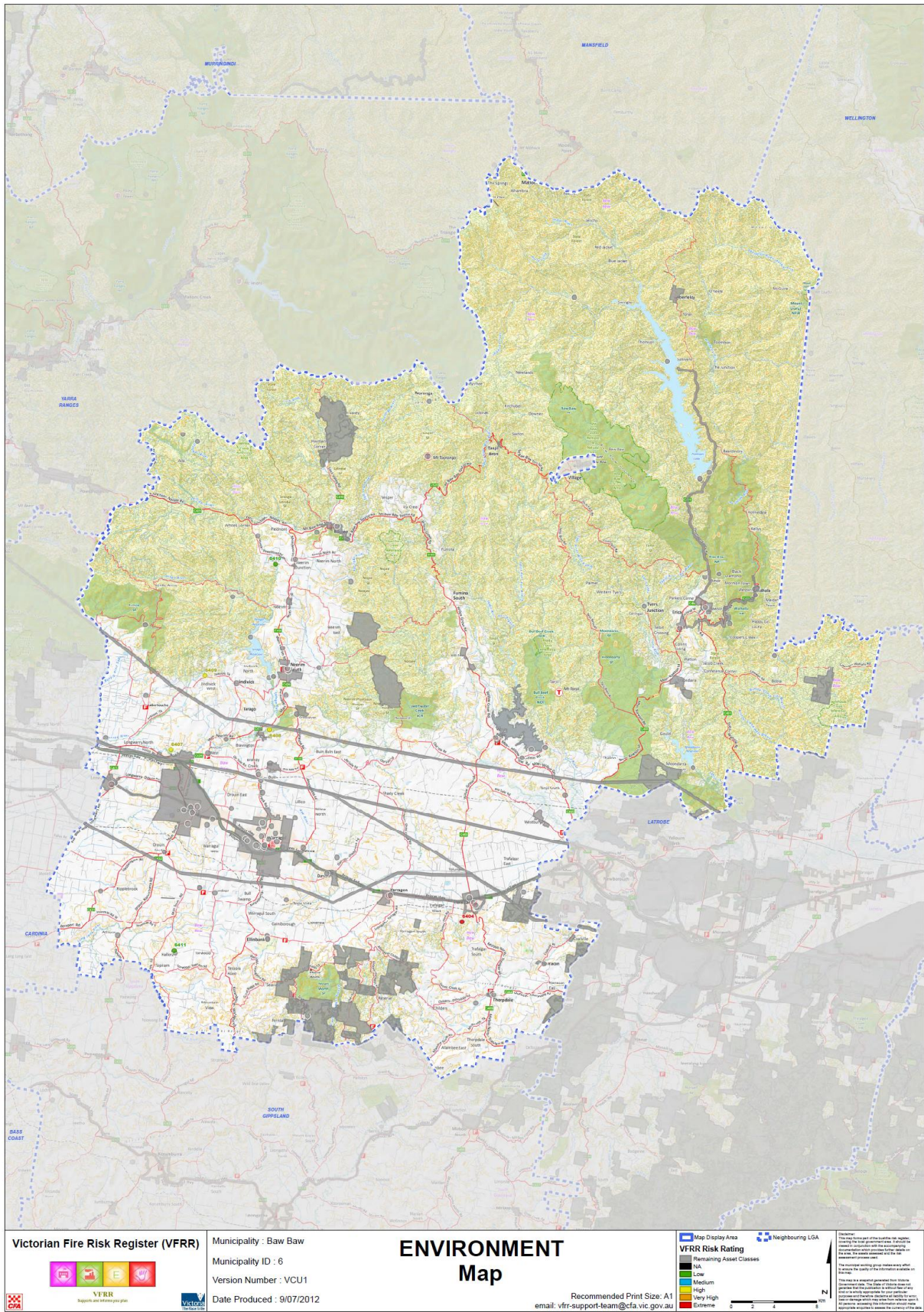
Map 4: Economic (Assets at Risk - Bushfire)



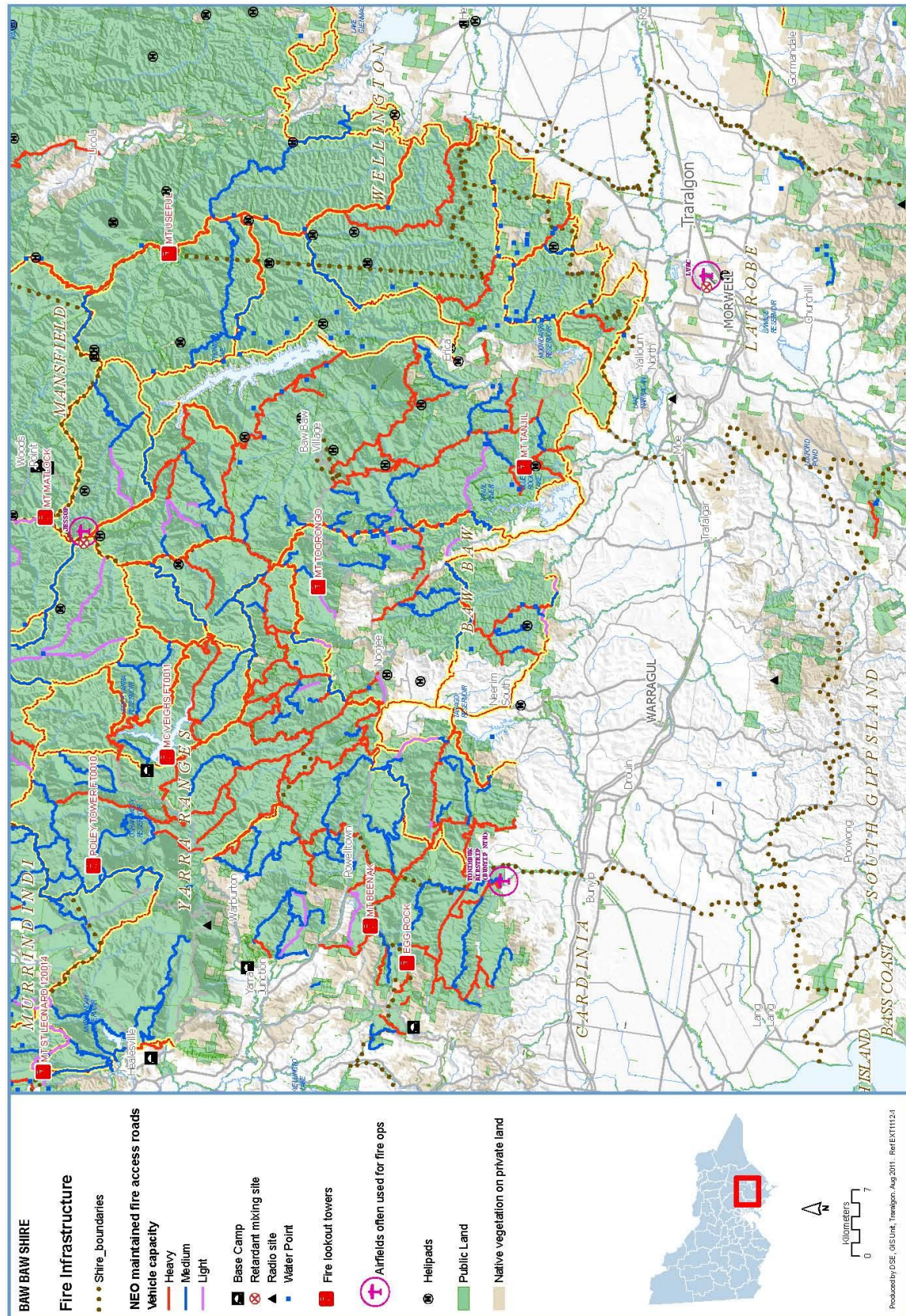
Map 5: Cultural/Heritage (Assets at Risk - Bushfire)



Map 6: Environmental (Assets at Risk - Bushfire)



Map 7: Baw Baw Shire Fire Infrastructure



Attachment D – Links to other plans

Quick Find by Organisation type	Owner	Plan Name and Year Issued (Amended)	Year Issued / Plan Life	Plan purpose	Multi-agency	Links to Business Plans for resource allocation	Fire hazards	Fire use
Municipality	Baw Baw Shire Council	Electric Line Clearance Tree Management Procedures		Tactical	Yes	Yes	Bushfire	Preparedness, Prevention
Municipality	Baw Baw Shire Council	Fire Prevention Works Plans			No	Yes	Bushfire	Preparedness, Prevention
Municipality	Baw Baw Shire Council	MFPP - Walhalla Goldfields Railway Plan						
Municipality	Baw Baw Shire Council	MFPP - Walhalla Sub Plan						
Municipality	Baw Baw Shire Council	Municipal Emergency Management Plan	2009 - 3	Strategic Tactical	Yes	Yes	All	Response, relief and recovery
Municipality	Baw Baw Shire Council	Municipal Planning Scheme	n/a	Strategic	Yes	Yes	All	
Municipality	Baw Baw Shire Council	Recovery Plan	- 3	Strategic Tactical	Yes	Yes	All	Recovery
Municipality	Baw Baw Shire Council	Roadside Management Plan						Prevention, Preparedness
Fire Service	CFA	Roadside Fire Management Guidelines		Tactical	Yes	No	Bushfire	Prevention
Fire Service	CFA: District 8, District 9	District Operational Management Plans	Y - 3	Strategic	Yes	No	All	Response
Fire Service	CFA: District 8, District 9	Pre-Incident Plans - CFA brigades have PIP's for significant risk within their area, including schools, hospitals, places of accommodation and industrial/chemical risks.		Tactical	Y	No	All	Response
Fire Service	CFA: District 9	Regional Operational Management Plans	Y? - 3	Strategic	Y	N	All	Response
CMA	CMA	Regional Catchment Strategy	Y - 6	Strategic	No	Yes		
Schools	DEECD	Bushfire at Risk Register - Bushfire At-Risk Register		Tactical	N/a	No	Bushfire	Response
Schools	DEECD	Code Red Closures (plan)		Tactical	N/a	No	All	Response
Emergency Services Organisation	DHS	Gippsland Regional Recovery Plan	Y	Tactical		Yes	All	Recovery
Fire Service	DELWP	Code of Practice for Fire Management on Public Land 2012	2012		No	No	Bushfire	Preparedness, Prevention, (Ecological)
Fire Service	DELWP	Fire Operations Plan - Gippsland	Annually, 3 Yrs rolling	Strategic Tactical	Yes	Yes	Bushfire	Preparedness, Prevention, (Ecological)
Fire Service	DELWP	Gippsland Regional Fire Protection Plan (cover all Districts)	1999 - 10		Yes		Bushfire	Preparedness, Prevention
Fire Service	DELWP	Road Management Plan						
Fire Service	DELWP/PV	Conservation Reserves Management Strategy			No	No	Bushfire	Preparedness, Prevention, (Ecological)
Fire Service	DELWP	Profile of Bushfire Risk Within Baw Baw Shire	2015 July	Strategic	Yes		Bushfire	Preparedness, Prevention
Forestry	DELWP/VF	MOU for Fire Ready		Strategic			Bushfire	
DELWP	DELWP	Emergency Management Partnership MOU 2009						
Plantations	HVP	Fire Protection Plan – Strategic Document Fire Operations Folders HVP/CFA Forest Industry Brigade Agreement					Bushfire	Preparedness, Prevention
Plantations	HVP	Fire Strategy and Management Plan	2011 – 1	Strategic	Yes		Bushfire	Response
Plantations	HVP	HVP Plantations Fire Management Strategy January 2011 Mount Worth Fire Suppression Plan Map	2011 – 1	Strategic Tactical	No	Yes	Bushfire	Response
Plantations	HVP	HVP Plantations Fire Management Strategy January 2011 Neerim Fire Suppression Plan Map	2011 – 1	Strategic Tactical	N	Y	Bushfire	Response
Plantations	HVP	HVP Plantations Fire Management Strategy January 2011 Thorpdale Fire Suppression Plan Map	2011 – 1	Strategic Tactical	N	Y	Bushfire	Response

Quick Find by Organisation type	Owner	Plan Name and Year Issued (Amended)	Year Issued / Plan Life	Plan purpose	Multi-agency	Links to Business Plans for resource allocation	Fire hazards	Fire use
Alpine Resort	Mount Baw Baw Alpine Resort	Mount Baw Baw Alpine Resort Emergency Plan						
Emergency Services Organisation	Police	Divisional Emergency Response Plans	Y - 2		Yes		All	Response
Emergency Services Organisation	Police	Gippsland Emergency Response Plan 2011			Yes		All	Response
Electricity Utility	SP AusNet - Distribution	Bushfire Mitigation Manual				No	Bushfire	Preparedness, Prevention
Electricity Utility	SP AusNet - Distribution	Bushfire Mitigation Plan	Y - 1	Strategic	No	Yes	Bushfire	Preparedness, Prevention
Electricity Utility	SP AusNet - Distribution	Bushfire Mitigation Procedures & Form Vegetation Management Plan & Procedures					Bushfire	Preparedness, Prevention
Electricity Utility	SP AusNet - Distribution	Bushfire Mitigation Strategy					Bushfire	Preparedness, Prevention
Electricity Utility	SP AusNet - Transmission	Guidelines for the Safety of Fire & Emergency Services Operating in the Vicinity Extra High Voltage Transmission Assets					Bushfire	Response, Recovery
Electricity Utility	SP AusNet - Transmission	Network Management Plan						
Electricity Utility	SP AusNet - Transmission	Transmission line Maintenance plans (Regional subset of State)	Y - 1	Strategic	No	Yes	Bushfire	
Electricity Utility	SP AusNet - Transmission	Vegetation Management Plan & Procedures					Bushfire	Preparedness, Prevention
Telco Utility	Telstra	Asset Protection Plans	Y - 1	Strategic Tactical	No	Yes	All	Preparedness, Prevention
Roads	VicRoads	Roadside Management Strategy		Strategic	No	Yes	Bushfire	Preparedness, Prevention
Rail	V/Line	Corridor Fire Prevention Plans (Subset of State plan)	Y - 1		Yes		Bushfire	Preparedness, Prevention
Rail	V/Line	Fire and Emergency Plans					All	
Schools	VRQA	Bushfire preparedness guidelines for (independent) schools	N/a	Tactical	N/a	No	Bushfire	Preparedness

Attachment E – Fire Access Roads

The following Fire Access Roads listing have been taken from the Municipal Fire Prevention Plan (MFPP) and are to be reviewed as part of the Gippsland RSFMP Risk Management Strategy 7 - Critical roads and related infrastructure identified across Gippsland and appropriate treatments identified in MFMP's. Strategy 7 recognises that Gippsland's roads are valuable in the prevention, suppression of, and recovery from bushfires.

In maintaining a consistent approach with the RSFMP one of the "outcomes" of the MFMP is to identify and review existing fuel management breaks, control lines and fire access roads networks.

Area	Access Road Name	Access for	Maintained
Trafalgar Tip area	Formed road behind the Trafalgar Tip between Giles Road and Old Thorpdale Road.	Tanker	Annually
Willow Grove	Cervi Road	Tanker	Annually
All DELWP Fire Access Roads	Refer Map Baw Baw Shire Fire Infrastructure (Attachment E)	Heavy Medium Light	Annually

Fire access roads/tracks are constructed and/or maintained expressly for fire management purposes to ensure they;

- provide safe and secure access for authorised vehicles;
- provide access to high fire risk areas;
- provide a link between established routes to reduce travel times for fire fighting vehicles;
- or
- provide a safe and adequate means of escape or alternative means of escape for persons residing in the area.

Fire access roads facilitate a rapid and concentrated response to areas where it will be critical to enable the early containment of an outbreak of fire and where road access is limited or off-road operation of two-wheel drive fire fighting vehicles would be difficult.

Where fire access roads are identified for construction or maintenance, the MFMP shall adopt a priority listing and applications made for accordingly by the MFPO. The Fire Access Road Subsidy Scheme (FARSS) is administered by CFA and is a State funded subsidy scheme. Subsidies are available for municipalities for the construction and maintenance of fire access roads or construction of static water supplies. Funding is provided annually.

Attachment F – Static Water Supplies

Adequate water supply for the purpose of firefighting is integral to planning for fire suppression. Static water supplies have been provided at various sites for the purposes of water supply for fires.

The sites currently with static water supplies are:

CFA Sites	Water Supply Size	Location	CFA Fitting Yes/No
Aberfeldy	45,000 Lt	Aberfeldy Fire Station	Yes
Athlone	45,000 Lt	Athlone Hall	Yes
Cloverlea	22,700 Lt	Cloverlea School	Yes
Hill End	45,000 Lt	Hill End Hall	Yes
Jindivick	22,700 Lt	Jindivick Hall	Yes
Labertouche	45,000 Lt	Labertouche Fire Station	Yes
Seaview	45,000 Lt	Seaview Hall	Yes
South Drouin	45,000 Lt	South Drouin Fire Station	Yes
Tanjil Bren	45,000 Lt	Township, Carpark Reserve	Yes
Trida	22,700 Lt	Trida Fire Station	Yes
Walhalla	45,000 Lt	Bus Turn Around	Yes
Rawson	45,000 Lt	Alan Croxford Memorial Reserve	Yes
North Nilma	60,000 Lt	Nilma North Fire Station	Yes
Noojee	20,000 Lt	Noojee Fire Station	Yes

All DELWP Water Points	Refer Map 7, Attachment C
-------------------------------	---------------------------

Rural water supplies can also be derived from;

- water supply from nearby town supplies;
- hydrants on water mains from storage reservoirs to town reticulation;
- permanent rivers or streams;
- farm dams or reserved firefighting dams;
- static water supplies (tanks); and
- reservoirs.

Attachment G – Fuel Management Break Systems

The roads listed below are the current CFA/ Baw Baw Shire Council fuel management breaks and are being reviewed as part of the Gippsland RSFMP Risk Management Strategy 7 - Critical roads and related infrastructure identified across Gippsland and appropriate treatments identified in MFMP's. Strategy 7 recognises that Gippsland's roads are valuable in the prevention, suppression of, and recovery from bushfires.

In maintaining a consistent approach with the RSFMP one of the "outcomes" of this MFMP is to identify and review existing fuel management breaks, control lines and fire access roads networks.

A Fuel management break is a feature, usually linear, where vegetation has been modified by planned burning or other means. A fuel management break may be a road or run parallel with a road or it may be within the landscape.

The first stage of achieving the outcome has been led by CFA and Gippsland Councils which has looked at all roads within municipalities to establish a Gippsland Region standardised road identification and classification process.

Baw Baw Shire roads listed in the following tables were classified using a values base. The roads are therefore classified in the table as either;

- nationally significant roads;
- state significant roads;
- regionally significant roads; or
- municipally significant roads.

Road Name	Section	Responsible Agency	Road Classification
Alcorn Road (Labertouche)	Labertouche Road to School Road	BBSC	Municipal
Allambee-Childers Road (Yarragon South to Childers)	Yarragon-Leongatha Road to Childers-Thorpdale Road	BBSC	Municipal
Brandy Creek Road	Full length	Vic Roads	National
Burnt Store Road (Lardner to Drouin South)	Lardners Track to Main South Road	BBSC	Municipal
Childers-Thorpdale Road (Thorpdale to Childers)	Allambee-Childers Road to Mirboo North-Trafalgar Road	BBSC	Municipal
Coalville Road (Narracan)	Narracan Connection Road to Municipal Boundary (south boundary of 689 Coalville Road)	BBSC	Regional
Cowwarr Road (Boola to Toongabbie)	Tyers- Walhalla Road to Bruntons Bridge Road	BBSC	Regional
Cowwarr-Walhalla Road (Toongabbie)	Bruntons Bridge Road to Municipal Boundary	BBSC	Regional
Darnum-Shady Creek Road (Darnum to Shady Creek)	Stuhrs Road to Yarragon-Shady Creek Road	BBSC	Municipal
Drouin-Korumburra Road (Main South Road; Drouin Road; Ranceby Road))	Full length (within municipality)	Vic Roads	Regional
Drouin-Warragul Road (Princes Way & Queen Street)	Full length (within municipality)	Vic Roads	Regional

Road Name	Section	Responsible Agency	Road Classification
East West Road (Warragul South to Warragul)	Lardners Track to Korumburra-Warragul Road	BBSC	Municipal
Forest Road (Labertouche)	School Road to McDonalds Road	BBSC	Municipal
Gardner And Holman Road (Drouin to Drouin South)	Longwarry Road to Lye and Dixon Road	BBSC	Municipal
Grand Ridge Road (Seaview to Trida)	Warragul-Korumburra Road to Allmans Road	BBSC	Regional
Hamiltons Road (Lardner to Warragul South)	Lardners Track to Warragul-Korumburra Road	BBSC	Municipal
Hazeldean Road (Yarragon to Ellinbank)	Princes Freeway to Warragul-Korumburra Road	BBSC	Regional
Hunter Road (Tanjil South)	Moe-Walhalla Road to Anderson Road	BBSC	Municipal
Invermay Road East Road (Athlone to Drouin South)	Drouin-Korumburra Road to Main South Road	BBSC	Municipal
Invermay Road West Road (Ripplebrook to Athlone)	Westernport Road to Drouin-Korumburra Road	BBSC	Municipal
Jacksons Track (Labertouche to Jindivick)	Labertouche Road to Jindivick-Neerim South Road	BBSC	Regional
Jindivick-Neerim South Road (Jindivick to Neerim South)	Jacksons Track to Main Neerim Road	BBSC	Regional
Koo Wee Rup-Longwarry Road (Modella Road; Kennedy Street; Princes Avenue; Sand Road)	Full length (within municipality)	Vic Roads	Municipal
Korumburra-Warragul Road (Howitt Street; Alfred Street)	Full length (within municipality)	Vic Roads	Municipal
Labertouche Road (Labertouche)	Middleton Road to Alcorn Road	BBSC	Municipal
Labertouche Road (Longwarry North to Labertouche)	Princes Way to Jacksons Track	BBSC	Regional
Lardners Track (Lardner)	Burnt Store Road to Hamiltons Road	BBSC	Municipal
Lardners Track (Warragul South to Warragul)	East West Road to Princes Way	BBSC	Municipal
Longwarry Road (Drouin)	Drouin-Longwarry Road to Princes Way	BBSC	Municipal
Longwarry-Drouin Road (Flinders Road; Mackay Street; Wellwood Road)	Full length (within municipality)	Vic Roads	Regional
Lye and Dixon Road (Ripplebrook)	Gardner And Holman Road to Westernport Road	BBSC	Municipal
Main Jindivick Road (Jindivick)	Main Neerim Road to Jacksons Track	BBSC	Municipal
Main Neerim Road	Full length	Vic Roads	State
Main South Road	From Drouin South to Poowong	Vic Roads	Regional
Main South Road (Drouin South to Poowong East)	Westernport Road to Waterfall Road	BBSC	Municipal

Road Name	Section	Responsible Agency	Road Classification
McDonald Road (Labertouche)	Forest Road to Jacksons Track	BBSC	Municipal
McDonalds Track (Narracan)	Morwell-Thorpdale Road to Narracan Connection Road	BBSC	Municipal
McDonalds Track (Seaview to Allambee)	Grand Ridge Road to Yarragon-Leongatha Road	BBSC	Municipal
Middleton Road (Labertouche)	Morrison Road to Labertouche Road	BBSC	Municipal
Mirboo North-Trafalgar Road (Contingent Street; Ashby Street)	Full length (within municipality)	Vic Roads	Regional
Moe-Rawson Road	Full length (within municipality)	Vic Roads	Municipal
Moe-Willow Grove Road	Full length (within municipality)	Vic Roads	Regional
Morrison Road (Longwarry North to Labertouche)	Princes Way to Middleton Road	BBSC	Municipal
Mount Baw Baw Tourist Road (Mt Baw Baw Road)	Full length (within municipality)	Vic Roads	Regional
Narracan Connection Road (Narracan)	Mirboo North-Trafalgar Road to Coalville Road	BBSC	Regional
Narracan Connection Road (Narracan)	Coalville Road to McDonalds Track	BBSC	Municipal
Nilma-Shady Creek Road (Nilma North)	Bloomfield Road to Stuhrs Road	BBSC	Municipal
Old Sale Road	Princes Way to Main Neerim Road	Vic Roads	State
Old Sale Road (Drouin West to Westbury)	Main Neerim Road to Prudens Track	BBSC	State
Princes Highway East (Princes Freeway)	Full length (within municipality)	Vic Roads	State
Princes Way (Longwarry North to Drouin West)	400m west of Morrison Road to Old Sale Road	BBSC	State
Prudens Track (Westbury)	Old Sale Road to Moe-Rawson Road	BBSC	State
Sand Road (Longwarry)	Princes Way to Princes Freeway	BBSC	Municipal
School Road (Labertouche)	Alcorn Road to Forest Road	BBSC	Municipal
South Face Road	Thomson Valley Road to Mount Baw Baw Tourist Road	BBSC (1 June to 30 September) DELWP (1 October to 31 May)	Regional
Stuhrs Road (Darnum)	Nilma-Shady Creek Road to Darnum-Shady Creek Road	BBSC	Municipal
Thomson Dam Access Road (Thomson)	Thomson Valley Road to Walhalla Road	BBSC	State
Tyers-Thomson Valley Road (Walhalla-Tyers Road)	Full length (within municipality)	Vic Roads	Regional
Walhalla Road	Tyers Thomson Valley Road to Walhalla	Vic Roads	State
Walhalla Road (Thomson to Toombon)	Thomson Dam Access Road to Selma Track	BBSC	State

Road Name	Section	Responsible Agency	Road Classification
Walhalla Road (Walhalla to Thomson)	Telecom Track (Walhalla Township) to Thomson Dam Access Road	BBSC	Regional
Warragul-Leongatha Road (Ellinbank to Seaview)	Warragul-Korumburra Road to Grand Ridge Road	BBSC	Regional
Westernport Road	Full length (within municipality)	Vic Roads	State
Willow Grove Road (Seven Mile Road; Waterloo Road)	Full length (within municipality)	Vic Roads	State
Yarra Junction-Noojee Road	Full length (within municipality)	Vic Roads	Regional
Yarragon-Leongatha (Allambee Reserve to Hallston)	McDonalds Track to Cameron And Johnsons Road	BBSC	Regional
Yarragon-Leongatha (Yarragon South to Allambee Reserve)	Allambee-Childers Road to McDonalds Track	BBSC	Municipal
Yarragon-Leongatha (Yarragon to Yarragon south)	Princes Hwy to Allambee-Childers Road	BBSC	Regional
Yarragon-Shady Creek Road (Shady Creek)	Darnum-Shady Creek Road to Old Sale Road	BBSC	Municipal

Identified treatments may vary to any given part of a road and may be applied with consideration to such factors as vegetation and identified level of risk, geography and seasonal influences.

Roads will also be identified as requiring a service level of “Heavy” or “Medium” in terms of vehicle traffic.

DELWP Permanent Fuel Breaks and Slashed Breaks

Current DELWP Strategic Fuel Breaks	Refer Attachment C – Map 7
-------------------------------------	----------------------------

Attachment H – MFMP Membership and Stakeholder Distribution List

MFMP Membership Agency/Organisation	Generic Representative Position
Baw Baw Shire Council	Municipal Fire Prevention Officer
Baw Baw Shire Council	Road Network Coordinator
CFA	Operations Officer – District 9 Baw Baw Catchment
CFA Volunteer Group Delegates	Baw Baw Group
DELWP	Fire Management Officer – Noojee Fire Management Officer – Erica
HVP	Gippsland Risk Manager
Mount Baw Baw Alpine Resort	CEO
VicRoads	Team Leader Program Delivery
Gippsland Water	Emergency Management & Security Co-ordinator
Melbourne Water	Senior Fire Manager, Civil and Strategic Asset Management
V/Line	Engineer Manager Track & Civil
AusNet Services	Senior Network Service Representative – Eastern Region
Victoria Police	Regional Emergency Management Inspector Eastern Region
External Stakeholders	Can view the MFMP on the Baw Baw Shire Council Website.

Attachment I – Glossary

Term	Description
Acceptable risk	The level of potential losses that a society or community considers acceptable, given existing social, economic, political, cultural, technical and environmental conditions.
Assets and values⁸	Recognised features of the built, natural and cultural environments. Built assets may include buildings, roads and bridges, structures managed by utility and service providers or recognised features of private land, such as houses and property, stock and crops and associated buildings and equipment. Natural assets may include forest produce, forest regeneration, conservation values including vegetation types, fauna, air and water catchments. Cultural values may include recreational, indigenous, historical, archaeological and landscape values.
Assumption	A conclusion that is reached based on the information available at the time.
Bushfire	A general term used to describe a fire in vegetation.
Combustible gas	A gas that will burn when it is within its flammability range.
Combustible liquid	A liquid that has a flash point above 61° C.
Combustion	Rapid oxidation of fuels producing heat, and often light.
Community	A group of people with a commonality of association and generally defined by location, shared experience or function.
Community based disaster risk management	A process that seeks to develop and implement strategies and activities for disaster preparedness (and often risk reduction) that is locally appropriate and locally 'owned'.
Consequence	Impact of an event.
Control Line	See Fireline
Critical infrastructure	<p>Critical infrastructure includes those services, physical facilities, supply chains, information technologies and communication networks that, if destroyed, degraded or rendered unavailable for an extended period would significantly impact on the social or economic well-being of the community including;</p> <ul style="list-style-type: none"> • telecommunications; • electrical power systems; • gas and oil storage and transportation; • banking and finance; • transportation; and • water supply systems (and sewerage). <p>Adapted from Critical Infrastructure Advisory Council (CIAC).</p>
Detection system	A system of fixed apparatus, normally part of an automatic fire alarm system in which fire detectors, control equipment and indicating equipment are employed for automatically detecting fire and initiating other action as arranged.
Detector (fire)	A device which gives a signal in response to a change in the ambient conditions in the vicinity or within the range of a detector, due to a fire.
Elements at risk	The population, buildings and civil engineering works, economic activities, public services and infrastructure etc. exposed to sources of risk.
Emergency	An event, actual, or imminent that endangers or threatens to endanger life, property or the environment, and that requires a significant and coordinated response.
Essential service	A service (including the supply of goods) provided by the;

⁸ Code of Practice for Emergency Management on Public Land

Term	Description
(Essential Services Commission Act 2001)	<ul style="list-style-type: none"> • electricity industry; • gas industry; • ports industry; • grain handling industry; • rail industry; • water industry; and • any other industry prescribed for the purpose of this definition.
Event	Occurrence of a particular set of circumstances. An incident or situation that occurs in a particular place during a particular interval of time.
Fire	<p>Comes under the definition of an Emergency. The EM Act defines 'emergency' as "the actual or imminent occurrence of an event which in any way endangers or threatens to endanger the safety or health of any person in Victoria or which destroys or damages, or threatens to destroy or damage, any property in Victoria or in any way endangers or threatens to endanger the environment or an element of the environment in Victoria, including, without limiting the generality of the foregoing and specific to integrated fire management and therefore includes;</p> <ul style="list-style-type: none"> • a fire; • an explosion; • a road accident or any other accident; or • a disruption.
Fire Access Track	A track constructed and/or maintained expressly for fire management purposes.
Fireline	A natural or constructed barrier or treated fire edge used in fire suppression and prescribed burning to limit the spread of fire.
Frequency	A measure of the number of occurrences per unit of time.
Fuel Management	Modification of fuels by prescribed burning, or other means. (AFAC)
Hazard	A source of potential harm or situation with a potential to cause loss. A potentially damaging physical event that may cause loss of life or injury, property damage, social and economic disruption or environmental degradation.
Impact	See consequence.
Leadership group	A subgroup of the broader committee comprising the risk category, technical knowledge and experience.
Likelihood	Used as a general description of probability or frequency. Can be expressed qualitatively or quantitatively.
Loss	Any negative consequence or adverse effect – financial or otherwise.
Mitigation	Measures taken in advance of a disaster, aimed at decreasing or eliminating its impact on society and environment.
Monitor	To check, supervise, critically observe or measure the progress of an activity, action or system on a regular basis in order to identify change from the performance level required or expected.
Organisation	Group of people and facilities with an arrangement of responsibilities, authorities and relationships.
Practicable ⁹	<p>What is realistic to achieve in the context of:</p> <ul style="list-style-type: none"> • the severity of the hazard or risk in question;

⁹ Dangerous Goods (Storage and Handling) Regulations 2000
S.R. No. 127/2000

Term	Description
	<ul style="list-style-type: none"> the state of knowledge about that hazard or risk and any ways of removing or mitigating that hazard or risk; the availability and suitability of ways to remove or mitigate that hazard or risk; and the cost of removing or mitigating that hazard or risk.
Preparedness	Arrangements to ensure that in the event of an emergency all those resources and services that are needed to cope with the effects can be efficiently mobilised and deployed.
Prevention	Regulatory and physical measures to ensure that emergencies are prevented or their effects mitigated.
Probability	A measure of the chance of occurrence expressed as a number between 0 and 10. 'Frequency' or 'likelihood' rather than 'probability' may be used in describing risk. The likelihood of a specific outcome as measured by the ratio of specific outcomes to the total number of possible outcomes. Probability is expressed as a number between zero and unity, zero indicating an impossible outcome and unity indicating an outcome that is certain. Probabilities are commonly expressed in terms of percentage.
Recovery	The coordinated process of supporting emergency affected communities in the reconstruction of the physical infrastructure and restoration of emotional, social, economic and physical wellbeing.
Residual risk	Risk remaining after implementation of risk treatment.
Resilience	The capacity of a system, community or society potentially exposed to hazards to adapt, by resisting or changing in order to reach and Maintain an acceptable level of functioning and Structure. This is determined by the degree to which the social system is capable of organizing itself to increase its capacity for learning from past disasters for better future protection and to improve risk reduction measures.
Response	Actions taken in anticipation of, during and immediately after an emergency, to ensure its effects are minimised and that people affected are given immediate relief and support.
Risk	The chance of something happening that will have an impact on objectives. The probability of harmful consequences resulting from interaction between natural or human-induced hazards and vulnerable condition.
Risk analysis	Systematic process to understand the nature of, and deduce, the level of risk.
Risk assessment	The overall process of risk identification, analysis and evaluation
Risk criteria	Terms of reference by which the significance of risk is assessed.
Risk evaluation	Process of comparing the level of risk against risk criteria.
Risk identification	The process of determining what, where, when, why and how something could happen.
Risk management	The culture, process and Structures that are directed towards realising potential opportunities whilst managing adverse effects.
Risk management process	The systematic application of management of policies, procedures and practices to the tasks of communicating, establishing the context, identifying, analysing, evaluating, treating, monitoring and reviewing risk.
Risk reduction	Actions taken to lessen the likelihood, negative consequences, or both, associated with a risk.
Risk register	A listing of risk Statements describing sources of risk and elements at risk, with assigned consequences, likelihoods and levels of risk.

Term	Description
Risk treatment	Process of selection and implementation of measures to modify risk. The term 'risk treatment' is sometimes used for the measures themselves.
Smoke alarm	A device which is activated by the presence of smoke and sounds an alarm.
Smoke Detector	A device which is sensitive to the presence of smoke.
Source of risk	Source of potential harm.
Stakeholders	Those people and organisations who may affect, be affected by, or perceive themselves to be affected by a decision, activity or risk.
Structures	Any building, industrial plant, erection, edifice, wall, chimney, fence, bridge, dam, reservoir, wharf, jetty, earth works, reclamation, ship, floating structure, or tunneling works.
Susceptibility	The potential to be affected by loss.
Tolerable Risk	A risk within a range that society can live with so as to secure certain net benefits. It is the range of risk regarded as non-negligible and needing to be kept under review and reduced further if possible.
Treatment	An existing process, policy, device, practice or other action that acts to minimise negative risk or enhance positive opportunities. The word control may also be applied to a process designed to provide reasonable assurance regarding the achievement of objectives.
Treatment (adequacy) assessment	Systematic review of processes to ensure that controls are still effective and appropriate.
Vulnerability	The conditions determined by physical, social, economic and environmental factors or processes, which increase the susceptibility of a community to the impact of hazards.
Vulnerable people (DHS definition)	Those living in high bushfire risk areas and who are unable to make an independent decision, including due to cognitive impairment; physically dependant and totally reliant on in home personal care and support; and people who live alone and are geographically and socially isolated with no co-resident carer or family.

Attachment J – Acronyms

Acronyms	Definition
BCA	Building Code of Australia
CFA	Country Fire Authority
CIG	Community Information Guide (formerly named Township Protection Plan)
DEECD	Department of Education and Early Child Development
DHHS	Department of Health & Human Services
DELWP	Department of Environment Land, Water & Planning
FOP	Fire Operations Plan
HAZMAT	Hazardous Material
HVP	Hancock Victorian Plantations
IFMP	Integrated Fire Management Planning
LGA	Local Government Area
MAV	Municipal Association Victoria
MEMP	Municipal Emergency Management Plan
MEMPC	Municipal Emergency Management Planning Committee
MFMP	Municipal Fire Management Plan
MFMPC	Municipal Fire Management Planning Committee
MFPO	Municipal Fire Prevention Officer
MFPP	Municipal Fire Prevention Plan
NSP/PLR	Neighbourhood Safer Place/Place of Last Resort
PIP	Pre-Incident Plan
PPRR	Prevention Preparedness Response Recovery
RSFMP	Regional Strategic Fire Management Plan
RSFMPC	Regional Strategic Fire Management Planning Committee
VFF	Victorian Farmers Federation
VFRR	Victorian Fire Risk Register
VicPol	Victoria Police
VICSES	Victoria State Emergency Service

Attachment K – References

Document Originator	Reference Title
Australian Bureau of Statistics	Australian Bureau of Statistics – Census Data 2006, 2011, 2014
State Government	Building Act 1993
COAG	Building Code of Australia (BCA) 1990, Building Regulations 1994
Fire Services Commissioner Victoria	Building New Foundations
State Government	Building Regulations 2006
Fire Services Commissioner Victoria	Bushfire Safety Policy 2010
Fire Services Commissioner Victoria	Bushfire Safety Policy Framework 2010
CFA	Caravan Park Fire Safety 2012
VicRoads	Code of Practice for Fire Prevention on Declared Roads
DELWP	Code of Practice for Bushfire Management on Public Land 2012
Fire Services Commissioner Victoria	Community Refuge Policy
State Government	Country Fire Authority Act 1958, CFA Regulations 1992
State Government	Dangerous Goods Regulations 2000
State Government	Electrical Safety Act 1998
State Government	Emergency Management Act 1986
State Government	Emergency Management Act 2013
State Government	Emergency Management Manual Victoria
Building Commissioner	Essential Services Measures Maintenance Manual
State Government	Fire Services Commissioner Act 2010
State Government	Flora and Fauna Act 1988
State Government	Forests Act 1958
State Government	Health & Safety Act 2008
SFMPC	Integrated Fire Management Planning Framework
SFMPC	Integrated Fire Management Planning Guide 2010
AS/NZS	ISO 31000: 2009
State Government	Living with fire - Victoria's Bushfire Strategy
CFA	Making Victoria Fire ready (Implementing Governments response to 2009 VBRC)
Baw Baw Shire Council	Municipal Emergency Management Plan
Baw Baw Shire Council	Municipal Fire Prevention Plan
State Government	National Parks Act 1975
State Government	Planning and Environment Act 1987
Fire Services Commissioner Victoria	Reform Action Plan 2011
State Government	Road Management Act 2004
CFA	Roadside Fire Management Guidelines (2005)
State Government	State Conservation Strategy 1987
SFMPC	State Fire Management Strategy 2009
AusNet Services	VEM Hazard Tree and 56M Assessment Procedure
CFA	VFRR Exports, Reports & Handouts
VicRoads	VicRoads 1085 Code of Practice