



Sue Acheson

Abstract Moments

Exhibition of paintings and ceramics from

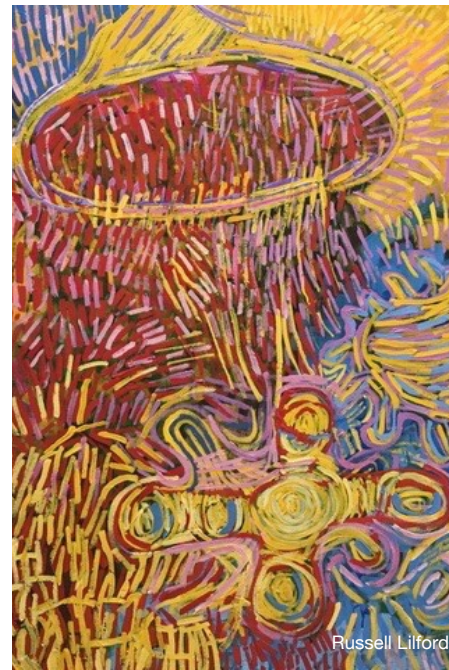
Russell Lilford and Sue Acheson

at The Station Gallery

From 2nd to 27th August 2017
Wednesday to Sunday 1030 - 1600

*Opening on Saturday 5th August at 2pm
Artists talks at 3pm*

The Station Gallery, Yarragon Rail Station,
West Gippsland, VIC 3823



Russell Lilford

Sue Acheson Artists Statement

My most recent body of work is examining the concept of knowledge being held by the core of our earth and within its rock forms. Ancient structures watching, knowing our follies and our achievements, stand with determination. We rip them from their seat of comprehension and use them for our own material benefit.

The notion of ancient forms which contain the answers to life, the universe and everything. The deep energies are embedded within, should we wish to listen. The pods, filled with information wait to deposit their contents when the time is right.



Russell Lilford Artists Statement

In this exhibition I am presenting works that articulate my current platform of thinking. That involves an evolution of ideas that stems from layers of human connection or connecting points of human existence.

I recently have been doing visual arts research into complexity science systems and network theory which sets up a foundation that internally informs my visual art practice.

The essence of the work comes through translating visual data from philosophical ideas and notions through to colour, texture, form and composition.